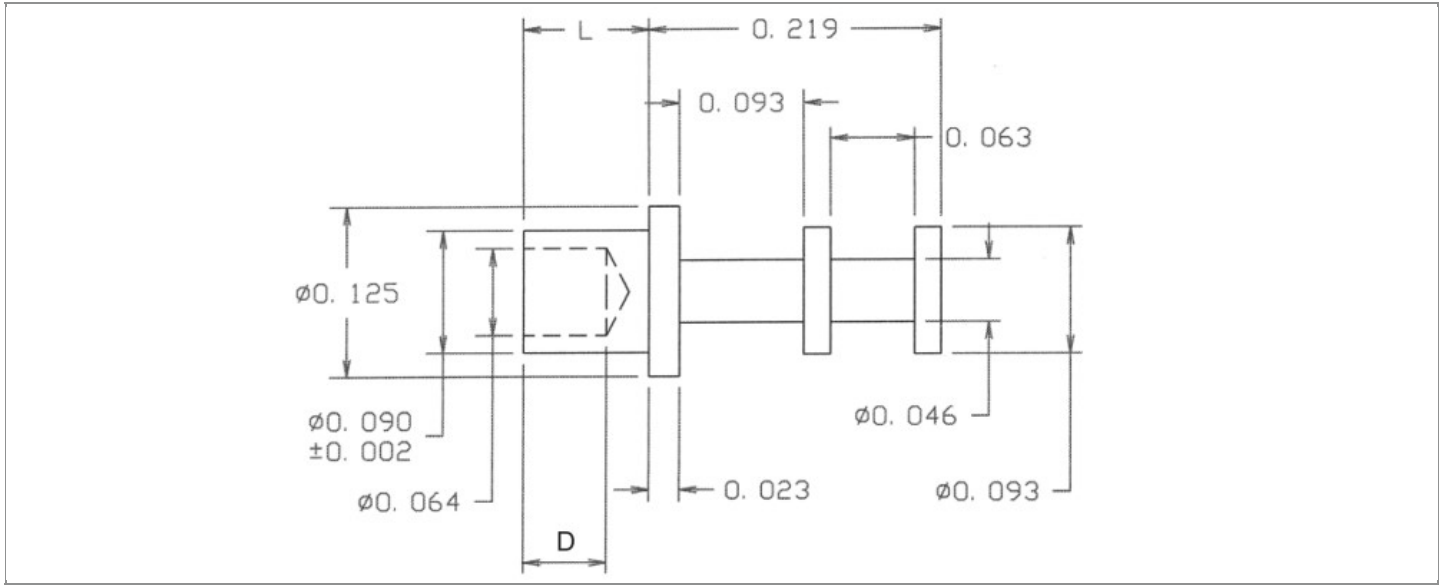


DRAWING NUMBER:	10-228-X-XX
PRODUCT GROUP:	TERMINALS
SUB-GROUP:	COMMERCIAL NON-INSULATED TERMINALS
DESCRIPTION:	NON-INSULATED DOUBLE TURRET TERMINAL



BOARD / PANEL MOUNTING METHOD	MOUNTING HOLE SIZE	DRILL SIZE	FEED THRU COMBINATION
SWAGE MOUNT	0.094" ± 0.001	3/32"	N/A

PART NO. STRUCTURE:

10-228 - X - XX
 PART SERIES DIMENSION FINISH

MATERIAL OPTIONS:

10-228-X-XX

COMPONENT	MATERIAL	MATERIAL AND SPECIFICATION
TERMINAL	ALUMINUM	ALUMINUM PER ASTM B211, ALLOY 2011-T3

DIMENSION OPTIONS:

10-228-X-XX

DIMENSION	A	D	PIN DIAMETER	OVERALL LENGTH	SHANK LENGTH (L)	BOARD/PANEL THICKNESS
1	N/A	0.047"	N/A	0.281"	0.062"	1/32"
2	N/A	0.062"	N/A	0.313"	0.094"	1/16"
3	N/A	0.062"	N/A	0.344"	0.125"	3/32"
4	N/A	0.062"	N/A	0.375"	0.156"	1/8"
6	N/A	0.062"	N/A	0.438"	0.219"	3/16"
8	N/A	0.062"	N/A	0.500"	0.281"	1/4"

FINISH - PLATING OPTIONS:

10-228-X-XX

FINISH CODE	COMPONENT	FINISH	FINISH AND SPECIFICATION
01	TERMINAL	SILVER	0.000300"MIN. SILVER PER ASTM B700, TYPE 2, GRADE D WITH A NON-CHROMATE PRESERVATIVE TREATMENT

TOLERANCES:*

DECIMAL	FRACTIONAL	ANGULAR	DRAWING ORIENTATION DATE	LAST MODIFICATION DATE
± 0.005	± 1/64	± 5 °	7/31/2000	3/1/2017

*All dimensions are in inches.

RoHS COMPLIANCE:

10-228-1-XX

PART NUMBER	RoHS COMPLIANT
10-228-1-01	YES

10-228-2-XX

PART NUMBER	RoHS COMPLIANT
10-228-2-01	YES

10-228-3-XX

PART NUMBER	RoHS COMPLIANT
10-228-3-01	YES

10-228-4-XX

PART NUMBER	RoHS COMPLIANT
10-228-4-01	YES

10-228-6-XX

PART NUMBER	RoHS COMPLIANT
10-228-6-01	YES

10-228-8-XX

PART NUMBER	RoHS COMPLIANT
10-228-8-01	YES

TOOLING:

INSTALLATION TOOL: ARBOR PRESS	INSTALLATION TOOL: ANVIL (ARBOR PRESS OPERATED)	INSTALLATION TOOL: PRESS-FIT / ROLL SWAGE / RIVET PUNCH (ARBOR PRESS OPERATED)	INSTALLATION TOOL: FLARE SWAGE PUNCH (ARBOR PRESS OPERATED)
TM1	TA125-94-23	TP90-64	TFLP90-175

NOTES:

DATASHEET NOTES
N/A
INSTRUCTION NOTES
SEE GENERAL SWAGING INSTALLATION INSTRUCTION ON CONCORD ELECTRONICS' WEBSITE WWW.CONCORD-ELECTRONICS.COM .