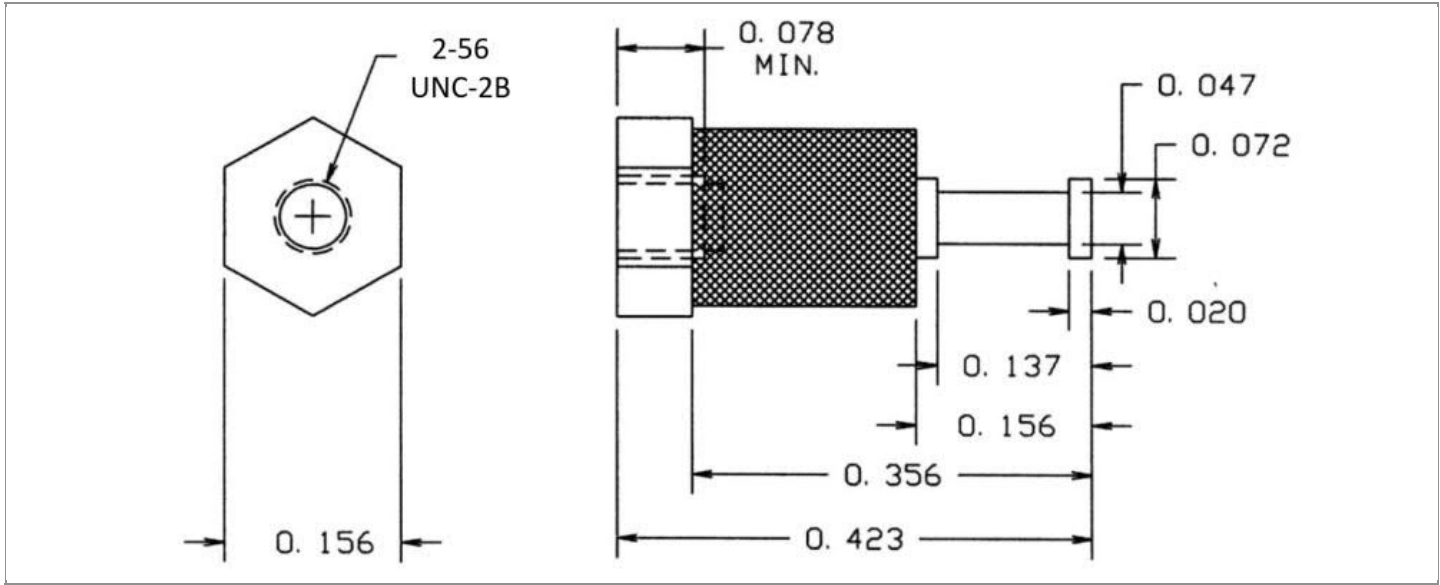


DRAWING NUMBER:	1127-02M-XXXX
PRODUCT GROUP:	TERMINALS
SUB-GROUP:	MILITARY INSULATED TERMINALS
DESCRIPTION:	DIALLYL PHTHALATE INSULATED TURRET TERMINAL



PIN DIAMETER	OVERALL LENGTH	MOUNTING ORIENTATION	BOARD / PANEL MOUNTING METHOD
N/A	0.423"	VERTICAL	THREAD MOUNT (2-56 SCREW)
BOARD / PANEL THICKNESS	MOUNTING HOLE SIZE	DRILL SIZE	FEED THRU COMBINATION
N/A	CLEARANCE FOR SCREW #2	3/32"	N/A

PART NO. STRUCTURE:*

1127	-	02M	-	XX	XX
PART SERIES		DIMENSION		FINISH	INSULATION COLOR

*If applicable, "Z" at the end of a PART NO. STRUCTURE indicates TERMINAL MATERIAL TYPE.

MATERIAL OPTIONS:

1127-02M-XXXX

COMPONENT	MATERIAL	MATERIAL AND SPECIFICATION
TERMINAL	BRASS	BRASS PER ASTM B16, ALLOY C36000, 1/2 HARD
BASE/METAL SLEEVE	BRASS	BRASS PER ASTM B16, ALLOY C36000, 1/2 HARD
INSULATION*	DIALLYL PHTHALATE	MOLDED DIALLYL PHTHALATE, TYPE SDG-F PER ASTM D5948
NUT	N/A	N/A
WASHER	N/A	N/A

*For Insulation color, please see INSULATION COLOR OPTIONS on Page 2

FINISH - PLATING OPTIONS:

1127-02M-XXXX

FINISH CODE	COMPONENT	FINISH	FINISH AND SPECIFICATION
05	TERMINAL	ELECTRO-SOLDER	0.000300"MIN. ELECTRO-SOLDER PER SAE-AMS-P-81728 OVER 0.000100"MIN. COPPER PER SAE-AMS-2418
	BASE/METAL SLEEVE	ELECTRO-SOLDER	0.000100"MIN. ELECTRO-SOLDER PER SAE-AMS-P-81728 OVER 0.000100"MIN. NICKEL PER SAE-AMS-QQ-N-290
	NUT	N/A	N/A
	WASHER	N/A	N/A
088	TERMINAL	BRIGHT TIN-LEAD	0.000300"MIN. BRIGHT TIN-LEAD (Sn93%-Pb7%) PER ASTM B545 OVER 0.000100"MIN. COPPER PER SAE-AMS-2418
	BASE/METAL SLEEVE	BRIGHT TIN-LEAD	0.000100"MIN. BRIGHT TIN-LEAD (Sn93%-Pb7%) PER ASTM B545 OVER 0.000100"MIN. NICKEL PER SAE-AMS-QQ-N-290
	NUT	N/A	N/A
	WASHER	N/A	N/A
095	TERMINAL	HOT SOLDER DIP	0.000100"MIN. HOT SOLDER DIP USING Sn60 PER IPC-J-STD-006 OVER 0.000100"MIN. COPPER PER SAE-AMS-2418
	BASE/METAL SLEEVE	BRIGHT TIN-LEAD	0.000100"MIN. BRIGHT TIN-LEAD (Sn93%-Pb7%) PER ASTM B545 OVER 0.000100"MIN. NICKEL PER SAE-AMS-QQ-N-290
	NUT	N/A	N/A
	WASHER	N/A	N/A

INSULATION COLOR OPTIONS:

1127-02M-XXXX

INSULATION COLOR	BLACK	BLUE	BROWN	GRAY	GREEN	ORANGE	RED	VIOLET	WHITE	YELLOW
COLOR CODE NO.	10	16	11	18	15	13	12	17	19	14

TOLERANCES:*

DECIMAL	FRACTIONAL	ANGULAR	DRAWING ORIGATION DATE	LAST MODIFICATION DATE
± 0.015	N/A	N/A	3/27/2001	3/1/2017

*All dimensions are in inches.

RoHS COMPLIANCE:

1127-02M-05XX

PART NUMBER	RoHS COMPLIANT
1127-02M-0510	NO
1127-02M-0511	NO
1127-02M-0512	NO
1127-02M-0513	NO
1127-02M-0514	NO
1127-02M-0515	NO
1127-02M-0516	NO
1127-02M-0517	NO
1127-02M-0518	NO
1127-02M-0519	NO

1127-02M-088XX

PART NUMBER	RoHS COMPLIANT
1127-02M-08810	NO
1127-02M-08811	NO
1127-02M-08812	NO
1127-02M-08813	NO
1127-02M-08814	NO
1127-02M-08815	NO
1127-02M-08816	NO
1127-02M-08817	NO
1127-02M-08818	NO
1127-02M-08819	NO

1127-02M-095XX

PART NUMBER	RoHS COMPLIANT
1127-02M-09510	NO
1127-02M-09511	NO
1127-02M-09512	NO
1127-02M-09513	NO
1127-02M-09514	NO
1127-02M-09515	NO
1127-02M-09516	NO
1127-02M-09517	NO
1127-02M-09518	NO
1127-02M-09519	NO

MILITARY REFERENCE SPECIFICATIONS:

1127-02M-05XX

PART NUMBER	MIL SPECIFICATION	MIL PART NUMBER	COMMERCIAL ITEM DESCRIPTION (CID) SPECIFICATION	CID PART NUMBER
1127-02M-0510	MIL-T-55155/19	M55155/190H02 (SE190D02S)	A-A-59126/19	AA59126/190H02
1127-02M-0511	MIL-T-55155/19	M55155/191H02 (SE191D02S)	A-A-59126/19	AA59126/191H02
1127-02M-0512	MIL-T-55155/19	M55155/192H02 (SE192D02S)	A-A-59126/19	AA59126/192H02
1127-02M-0513	MIL-T-55155/19	M55155/193H02 (SE193D02S)	A-A-59126/19	AA59126/193H02
1127-02M-0514	MIL-T-55155/19	M55155/194H02 (SE194D02S)	A-A-59126/19	AA59126/194H02
1127-02M-0515	MIL-T-55155/19	M55155/195H02 (SE195D02S)	A-A-59126/19	AA59126/195H02
1127-02M-0516	MIL-T-55155/19	M55155/196H02 (SE196D02S)	A-A-59126/19	AA59126/196H02
1127-02M-0517	MIL-T-55155/19	M55155/197H02 (SE197D02S)	A-A-59126/19	AA59126/197H02
1127-02M-0518	MIL-T-55155/19	M55155/198H02 (SE198D02S)	A-A-59126/19	AA59126/198H02
1127-02M-0519	MIL-T-55155/19	M55155/199H02 (SE199D02S)	A-A-59126/19	AA59126/199H02

1127-02M-088XX

PART NUMBER	MIL SPECIFICATION	MIL PART NUMBER	COMMERCIAL ITEM DESCRIPTION (CID) SPECIFICATION	CID PART NUMBER
1127-02M-08810	MIL-T-55155/19	M55155/190J02	A-A-59126/19	AA59126/190J02 (AA59126/19002)
1127-02M-08811	MIL-T-55155/19	M55155/191J02	A-A-59126/19	AA59126/191J02 (AA59126/19102)
1127-02M-08812	MIL-T-55155/19	M55155/192J02	A-A-59126/19	AA59126/192J02 (AA59126/19202)
1127-02M-08813	MIL-T-55155/19	M55155/193J02	A-A-59126/19	AA59126/193J02 (AA59126/19302)
1127-02M-08814	MIL-T-55155/19	M55155/194J02	A-A-59126/19	AA59126/194J02 (AA59126/19402)

Continued on next page...

MILITARY REFERENCE SPECIFICATIONS CONTINUED:

1127-02M-088XX

PART NUMBER	MIL SPECIFICATION	MIL PART NUMBER	COMMERCIAL ITEM DESCRIPTION (CID) SPECIFICATION	CID PART NUMBER
1127-02M-08815	MIL-T-55155/19	M55155/195J02	A-A-59126/19	AA59126/195J02 (AA59126/19502)
1127-02M-08816	MIL-T-55155/19	M55155/196J02	A-A-59126/19	AA59126/196J02 (AA59126/19602)
1127-02M-08817	MIL-T-55155/19	M55155/197J02	A-A-59126/19	AA59126/197J02 (AA59126/19702)
1127-02M-08818	MIL-T-55155/19	M55155/198J02	A-A-59126/19	AA59126/198J02 (AA59126/19802)
1127-02M-08819	MIL-T-55155/19	M55155/199J02	A-A-59126/19	AA59126/199J02 (AA59126/19902)

1127-02M-095XX

PART NUMBER	MIL SPECIFICATION	MIL PART NUMBER	COMMERCIAL ITEM DESCRIPTION (CID) SPECIFICATION	CID PART NUMBER
1127-02M-09510	MIL-T-55155/19	M55155/190I02	A-A-59126/19	AA59126/190I02
1127-02M-09511	MIL-T-55155/19	M55155/191I02	A-A-59126/19	AA59126/191I02
1127-02M-09512	MIL-T-55155/19	M55155/192I02	A-A-59126/19	AA59126/192I02
1127-02M-09513	MIL-T-55155/19	M55155/193I02	A-A-59126/19	AA59126/193I02
1127-02M-09514	MIL-T-55155/19	M55155/194I02	A-A-59126/19	AA59126/194I02
1127-02M-09515	MIL-T-55155/19	M55155/195I02	A-A-59126/19	AA59126/195I02
1127-02M-09516	MIL-T-55155/19	M55155/196I02	A-A-59126/19	AA59126/196I02
1127-02M-09517	MIL-T-55155/19	M55155/197I02	A-A-59126/19	AA59126/197I02
1127-02M-09518	MIL-T-55155/19	M55155/198I02	A-A-59126/19	AA59126/198I02
1127-02M-09519	MIL-T-55155/19	M55155/199I02	A-A-59126/19	AA59126/199I02

TOOLING:

INSTALLATION TOOL: ARBOR PRESS	INSTALLATION TOOL: ANVIL (ARBOR PRESS OPERATED)	INSTALLATION TOOL: PRESS-FIT / ROLL SWAGE / RIVET PUNCH (ARBOR PRESS OPERATED)	INSTALLATION TOOL: PRESS-FIT (HAND OPERATED)
N/A	N/A	N/A	N/A

NOTES:

DATASHEET NOTES
SCREW IS NOT INCLUDED.
INSTRUCTION NOTES
N/A