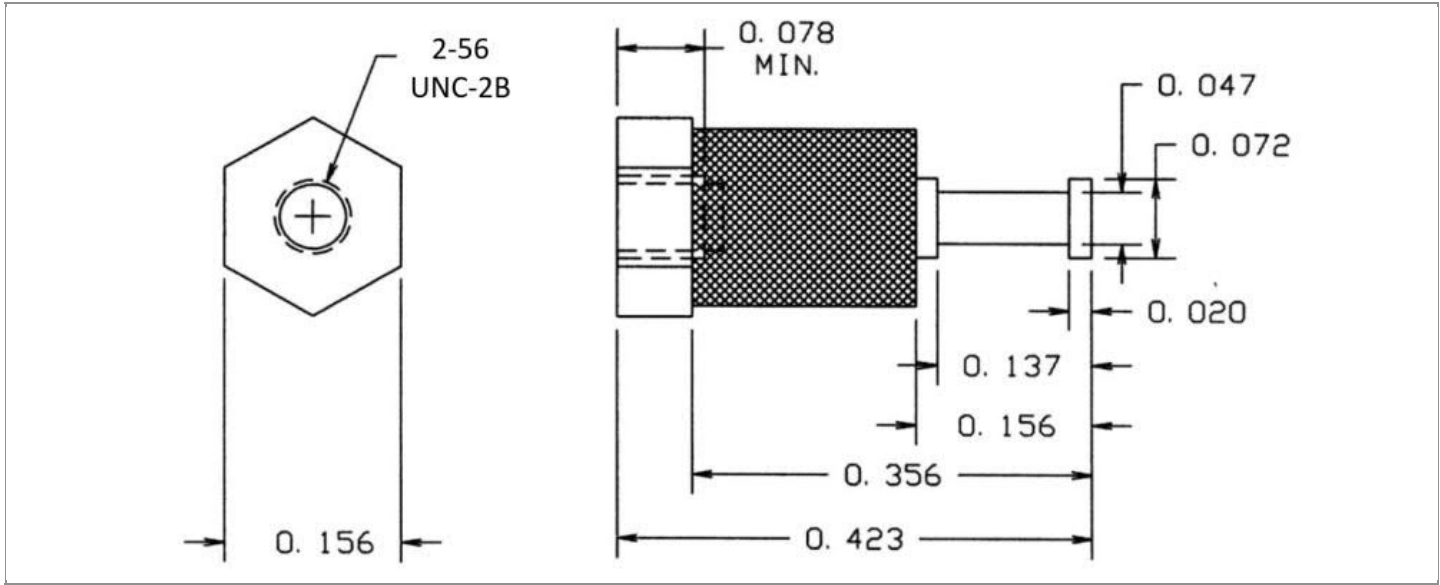


DRAWING NUMBER:	1127-02M-XXXXZ
PRODUCT GROUP:	TERMINALS
SUB-GROUP:	MILITARY INSULATED TERMINALS
DESCRIPTION:	DIALLYL PHTHALATE INSULATED TURRET TERMINAL



PIN DIAMETER	OVERALL LENGTH	MOUNTING ORIENTATION	BOARD / PANEL MOUNTING METHOD
N/A	0.423"	VERTICAL	THREAD MOUNT (2-56 SCREW)
BOARD / PANEL THICKNESS	MOUNTING HOLE SIZE	DRILL SIZE	FEED THRU COMBINATION
N/A	CLEARANCE FOR SCREW #2	3/32"	N/A

PART NO. STRUCTURE:*

1127	-	02M	-	XX	XX
PART SERIES		DIMENSION		FINISH	INSULATION COLOR

*If applicable, "Z" at the end of a PART NO. STRUCTURE indicates TERMINAL MATERIAL TYPE.

MATERIAL OPTIONS:

1127-02M-XXXXZ

COMPONENT	MATERIAL	MATERIAL AND SPECIFICATION
TERMINAL	PHOSPHOR BRONZE	PHOSPHOR BRONZE PER ASTM B139, ALLOY C54400
BASE/METAL SLEEVE	BRASS	BRASS PER ASTM B16, ALLOY C36000, 1/2 HARD
INSULATION*	DIALLYL PHTHALATE	MOLDED DIALLYL PHTHALATE, TYPE SDG-F PER ASTM D5948
NUT	N/A	N/A
WASHER	N/A	N/A

*For Insulation color, please see INSULATION COLOR OPTIONS on Page 2

FINISH - PLATING OPTIONS:

1127-02M-XXXXZ

FINISH CODE	COMPONENT	FINISH	FINISH AND SPECIFICATION
05	TERMINAL	ELECTRO-SOLDER	0.000300"MIN. ELECTRO-SOLDER PER SAE-AMS-P-81728 OVER 0.000100"MIN. COPPER PER SAE-AMS-2418
	BASE/METAL SLEEVE	ELECTRO-SOLDER	0.000100"MIN. ELECTRO-SOLDER PER SAE-AMS-P-81728 OVER 0.000100"MIN. NICKEL PER SAE-AMS-QQ-N-290
	NUT	N/A	N/A
	WASHER	N/A	N/A
088	TERMINAL	BRIGHT TIN-LEAD	0.000300"MIN. BRIGHT TIN-LEAD (Sn93%-Pb7%) PER ASTM B545 OVER 0.000100"MIN. COPPER PER SAE-AMS-2418
	BASE/METAL SLEEVE	BRIGHT TIN-LEAD	0.000100"MIN. BRIGHT TIN-LEAD (Sn93%-Pb7%) PER ASTM B545 OVER 0.000100"MIN. NICKEL PER SAE-AMS-QQ-N-290
	NUT	N/A	N/A
	WASHER	N/A	N/A
095	TERMINAL	HOT SOLDER DIP	0.000100"MIN. HOT SOLDER DIP USING Sn60 PER IPC-J-STD-006 OVER 0.000100"MIN. COPPER PER SAE-AMS-2418
	BASE/METAL SLEEVE	BRIGHT TIN-LEAD	0.000100"MIN. BRIGHT TIN-LEAD (Sn93%-Pb7%) PER ASTM B545 OVER 0.000100"MIN. NICKEL PER SAE-AMS-QQ-N-290
	NUT	N/A	N/A
	WASHER	N/A	N/A

INSULATION COLOR OPTIONS:

1127-02M-XXXXZ

INSULATION COLOR	BLACK	BLUE	BROWN	GRAY	GREEN	ORANGE	RED	VIOLET	WHITE	YELLOW
COLOR CODE NO.	10	16	11	18	15	13	12	17	19	14

TOLERANCES:*

DECIMAL	FRACTIONAL	ANGULAR	DRAWING ORIGATION DATE	LAST MODIFICATION DATE
± 0.015	N/A	N/A	3/27/2001	3/1/2017

*All dimensions are in inches.

RoHS COMPLIANCE:

1127-02M-05XXZ

PART NUMBER	RoHS COMPLIANT
1127-02M-0510Z	NO
1127-02M-0511Z	NO
1127-02M-0512Z	NO
1127-02M-0513Z	NO
1127-02M-0514Z	NO
1127-02M-0515Z	NO
1127-02M-0516Z	NO
1127-02M-0517Z	NO
1127-02M-0518Z	NO
1127-02M-0519Z	NO

1127-02M-088XXZ

PART NUMBER	RoHS COMPLIANT
1127-02M-08810Z	NO
1127-02M-08811Z	NO
1127-02M-08812Z	NO
1127-02M-08813Z	NO
1127-02M-08814Z	NO
1127-02M-08815Z	NO
1127-02M-08816Z	NO
1127-02M-08817Z	NO
1127-02M-08818Z	NO
1127-02M-08819Z	NO

1127-02M-095XXZ

PART NUMBER	RoHS COMPLIANT
1127-02M-09510Z	NO
1127-02M-09511Z	NO
1127-02M-09512Z	NO
1127-02M-09513Z	NO
1127-02M-09514Z	NO
1127-02M-09515Z	NO
1127-02M-09516Z	NO
1127-02M-09517Z	NO
1127-02M-09518Z	NO
1127-02M-09519Z	NO

MILITARY REFERENCE SPECIFICATIONS:

1127-02M-05XXZ

PART NUMBER	MIL SPECIFICATION	MIL PART NUMBER	COMMERCIAL ITEM DESCRIPTION (CID) SPECIFICATION	CID PART NUMBER
1127-02M-0510Z	MIL-T-55155/19	M55155/190B02 (SE190D02Z)	A-A-59126/19	AA59126/190B02
1127-02M-0511Z	MIL-T-55155/19	M55155/191B02 (SE191D02Z)	A-A-59126/19	AA59126/191B02
1127-02M-0512Z	MIL-T-55155/19	M55155/192B02 (SE192D02Z)	A-A-59126/19	AA59126/192B02
1127-02M-0513Z	MIL-T-55155/19	M55155/193B02 (SE193D02Z)	A-A-59126/19	AA59126/193B02
1127-02M-0514Z	MIL-T-55155/19	M55155/194B02 (SE194D02Z)	A-A-59126/19	AA59126/194B02
1127-02M-0515Z	MIL-T-55155/19	M55155/195B02 (SE195D02Z)	A-A-59126/19	AA59126/195B02
1127-02M-0516Z	MIL-T-55155/19	M55155/196B02 (SE196D02Z)	A-A-59126/19	AA59126/196B02
1127-02M-0517Z	MIL-T-55155/19	M55155/197B02 (SE197D02Z)	A-A-59126/19	AA59126/197B02
1127-02M-0518Z	MIL-T-55155/19	M55155/198B02 (SE198D02Z)	A-A-59126/19	AA59126/198B02
1127-02M-0519Z	MIL-T-55155/19	M55155/199B02 (SE199D02Z)	A-A-59126/19	AA59126/199B02

1127-02M-088XXZ

PART NUMBER	MIL SPECIFICATION	MIL PART NUMBER	COMMERCIAL ITEM DESCRIPTION (CID) SPECIFICATION	CID PART NUMBER
1127-02M-08810Z	MIL-T-55155/19	M55155/190D02	A-A-59126/19	AA59126/190D02
1127-02M-08811Z	MIL-T-55155/19	M55155/191D02	A-A-59126/19	AA59126/191D02
1127-02M-08812Z	MIL-T-55155/19	M55155/192D02	A-A-59126/19	AA59126/192D02
1127-02M-08813Z	MIL-T-55155/19	M55155/193D02	A-A-59126/19	AA59126/193D02
1127-02M-08814Z	MIL-T-55155/19	M55155/194D02	A-A-59126/19	AA59126/194D02

Continued on next page...

MILITARY REFERENCE SPECIFICATIONS CONTINUED:

1127-02M-088XXZ

PART NUMBER	MIL SPECIFICATION	MIL PART NUMBER	COMMERCIAL ITEM DESCRIPTION (CID) SPECIFICATION	CID PART NUMBER
1127-02M-08815Z	MIL-T-55155/19	M55155/195D02	A-A-59126/19	AA59126/195D02
1127-02M-08816Z	MIL-T-55155/19	M55155/196D02	A-A-59126/19	AA59126/196D02
1127-02M-08817Z	MIL-T-55155/19	M55155/197D02	A-A-59126/19	AA59126/197D02
1127-02M-08818Z	MIL-T-55155/19	M55155/198D02	A-A-59126/19	AA59126/198D02
1127-02M-08819Z	MIL-T-55155/19	M55155/199D02	A-A-59126/19	AA59126/199D02

1127-02M-095XXZ

PART NUMBER	MIL SPECIFICATION	MIL PART NUMBER	COMMERCIAL ITEM DESCRIPTION (CID) SPECIFICATION	CID PART NUMBER
1127-02M-09510Z	MIL-T-55155/19	M55155/190C02	A-A-59126/19	AA59126/190C02
1127-02M-09511Z	MIL-T-55155/19	M55155/191C02	A-A-59126/19	AA59126/191C02
1127-02M-09512Z	MIL-T-55155/19	M55155/192C02	A-A-59126/19	AA59126/192C02
1127-02M-09513Z	MIL-T-55155/19	M55155/193C02	A-A-59126/19	AA59126/193C02
1127-02M-09514Z	MIL-T-55155/19	M55155/194C02	A-A-59126/19	AA59126/194C02
1127-02M-09515Z	MIL-T-55155/19	M55155/195C02	A-A-59126/19	AA59126/195C02
1127-02M-09516Z	MIL-T-55155/19	M55155/196C02	A-A-59126/19	AA59126/196C02
1127-02M-09517Z	MIL-T-55155/19	M55155/197C02	A-A-59126/19	AA59126/197C02
1127-02M-09518Z	MIL-T-55155/19	M55155/198C02	A-A-59126/19	AA59126/198C02
1127-02M-09519Z	MIL-T-55155/19	M55155/199C02	A-A-59126/19	AA59126/199C02

TOOLING:

INSTALLATION TOOL: ARBOR PRESS	INSTALLATION TOOL: ANVIL (ARBOR PRESS OPERATED)	INSTALLATION TOOL: PRESS-FIT / ROLL SWAGE / RIVET PUNCH (ARBOR PRESS OPERATED)	INSTALLATION TOOL: PRESS-FIT (HAND OPERATED)
N/A	N/A	N/A	N/A

NOTES:

DATASHEET NOTES
SCREW IS NOT INCLUDED.
INSTRUCTION NOTES
N/A