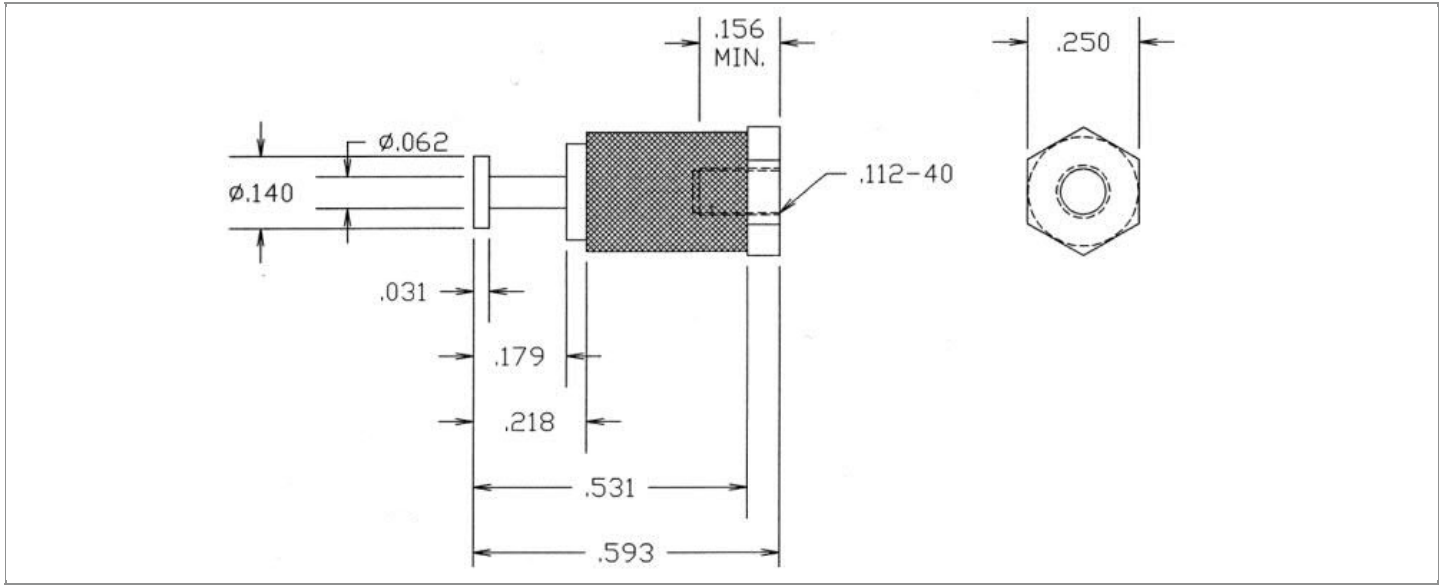


<b>DRAWING NUMBER:</b>	<b>1127-01M-XXXX</b>
<b>PRODUCT GROUP:</b>	TERMINALS
<b>SUB-GROUP:</b>	MILITARY INSULATED TERMINALS
<b>DESCRIPTION:</b>	DIALLYL PHTHALATE INSULATED TURRET TERMINAL



PIN DIAMETER	OVERALL LENGTH	MOUNTING ORIENTATION	BOARD / PANEL MOUNTING METHOD
N/A	0.593"	VERTICAL	THREAD MOUNT (4-40 SCREW)
BOARD / PANEL THICKNESS	MOUNTING HOLE SIZE	DRILL SIZE	FEED THRU COMBINATION
N/A	CLEARANCE FOR SCREW #4	#31	N/A

**PART NO. STRUCTURE:\***

<b>1127</b>	-	<b>01M</b>	-	<b>XX</b>	<b>XX</b>
<small>PART SERIES</small>		<small>DIMENSION</small>		<small>FINISH</small>	<small>INSULATION COLOR</small>

\*If applicable, "Z" at the end of a PART NO. STRUCTURE indicates TERMINAL MATERIAL TYPE.

**MATERIAL OPTIONS:**

**1127-01M-XXXX**

COMPONENT	MATERIAL	MATERIAL AND SPECIFICATION
TERMINAL	BRASS	BRASS PER ASTM B16, ALLOY C36000, 1/2 HARD
BASE/METAL SLEEVE	BRASS	BRASS PER ASTM B16, ALLOY C36000, 1/2 HARD
INSULATION*	DIALLYL PHTHALATE	MOLDED DIALLYL PHTHALATE, TYPE SDG-F PER ASTM D5948
NUT	N/A	N/A
WASHER	N/A	N/A

\*For Insulation color, please see INSULATION COLOR OPTIONS on Page 2

FINISH - PLATING OPTIONS:

1127-01M-XXXX

FINISH CODE	COMPONENT	FINISH	FINISH AND SPECIFICATION
05	TERMINAL	ELECTRO-SOLDER	0.000300"MIN. ELECTRO-SOLDER PER SAE-AMS-P-81728 OVER 0.000100"MIN. COPPER PER SAE-AMS-2418
	BASE/METAL SLEEVE	ELECTRO-SOLDER	0.000100"MIN. ELECTRO-SOLDER PER SAE-AMS-P-81728 OVER 0.000100"MIN. NICKEL PER SAE-AMS-QQ-N-290
	NUT	N/A	N/A
	WASHER	N/A	N/A
088	TERMINAL	BRIGHT TIN-LEAD	0.000300"MIN. BRIGHT TIN-LEAD (Sn93%-Pb7%) PER ASTM B545 OVER 0.000100"MIN. COPPER PER SAE-AMS-2418
	BASE/METAL SLEEVE	BRIGHT TIN-LEAD	0.000100"MIN. BRIGHT TIN-LEAD (Sn93%-Pb7%) PER ASTM B545 OVER 0.000100"MIN. NICKEL PER SAE-AMS-QQ-N-290
	NUT	N/A	N/A
	WASHER	N/A	N/A
095	TERMINAL	HOT SOLDER DIP	0.000100"MIN. HOT SOLDER DIP USING Sn60 PER IPC-J-STD-006 OVER 0.000100"MIN. COPPER PER SAE-AMS-2418
	BASE/METAL SLEEVE	BRIGHT TIN-LEAD	0.000100"MIN. BRIGHT TIN-LEAD (Sn93%-Pb7%) PER ASTM B545 OVER 0.000100"MIN. NICKEL PER SAE-AMS-QQ-N-290
	NUT	N/A	N/A
	WASHER	N/A	N/A

INSULATION COLOR OPTIONS:

1127-01M-XXXX

INSULATION COLOR	BLACK	BLUE	BROWN	GRAY	GREEN	ORANGE	RED	VIOLET	WHITE	YELLOW
COLOR CODE NO.	10	16	11	18	15	13	12	17	19	14

TOLERANCES:\*

DECIMAL	FRACTIONAL	ANGULAR	DRAWING ORIGATION DATE	LAST MODIFICATION DATE
± 0.015	N/A	N/A	3/29/1996	3/1/2017

\*All dimensions are in inches.

RoHS COMPLIANCE:

1127-01M-05XX

PART NUMBER	RoHS COMPLIANT
1127-01M-0510	NO
1127-01M-0511	NO
1127-01M-0512	NO
1127-01M-0513	NO
1127-01M-0514	NO
1127-01M-0515	NO
1127-01M-0516	NO
1127-01M-0517	NO
1127-01M-0518	NO
1127-01M-0519	NO

1127-01M-088XX

PART NUMBER	RoHS COMPLIANT
1127-01M-08810	NO
1127-01M-08811	NO
1127-01M-08812	NO
1127-01M-08813	NO
1127-01M-08814	NO
1127-01M-08815	NO
1127-01M-08816	NO
1127-01M-08817	NO
1127-01M-08818	NO
1127-01M-08819	NO

1127-01M-095XX

PART NUMBER	RoHS COMPLIANT
1127-01M-09510	NO
1127-01M-09511	NO
1127-01M-09512	NO
1127-01M-09513	NO
1127-01M-09514	NO
1127-01M-09515	NO
1127-01M-09516	NO
1127-01M-09517	NO
1127-01M-09518	NO
1127-01M-09519	NO

MILITARY REFERENCE SPECIFICATIONS:

1127-01M-05XX

PART NUMBER	MIL SPECIFICATION	MIL PART NUMBER	COMMERCIAL ITEM DESCRIPTION (CID) SPECIFICATION	CID PART NUMBER
1127-01M-0510	MIL-T-55155/19	M55155/190H01 (SE190D01S)	A-A-59126/19	AA59126/190H01
1127-01M-0511	MIL-T-55155/19	M55155/191H01 (SE191D01S)	A-A-59126/19	AA59126/191H01
1127-01M-0512	MIL-T-55155/19	M55155/192H01 (SE192D01S)	A-A-59126/19	AA59126/192H01
1127-01M-0513	MIL-T-55155/19	M55155/193H01 (SE193D01S)	A-A-59126/19	AA59126/193H01
1127-01M-0514	MIL-T-55155/19	M55155/194H01 (SE194D01S)	A-A-59126/19	AA59126/194H01
1127-01M-0515	MIL-T-55155/19	M55155/195H01 (SE195D01S)	A-A-59126/19	AA59126/195H01
1127-01M-0516	MIL-T-55155/19	M55155/196H01 (SE196D01S)	A-A-59126/19	AA59126/196H01
1127-01M-0517	MIL-T-55155/19	M55155/197H01 (SE197D01S)	A-A-59126/19	AA59126/197H01
1127-01M-0518	MIL-T-55155/19	M55155/198H01 (SE198D01S)	A-A-59126/19	AA59126/198H01
1127-01M-0519	MIL-T-55155/19	M55155/199H01 (SE199D01S)	A-A-59126/19	AA59126/199H01

1127-01M-088XX

PART NUMBER	MIL SPECIFICATION	MIL PART NUMBER	COMMERCIAL ITEM DESCRIPTION (CID) SPECIFICATION	CID PART NUMBER
1127-01M-08810	MIL-T-55155/19	M55155/190J01	A-A-59126/19	AA59126/190J01 (AA59126/19001)
1127-01M-08811	MIL-T-55155/19	M55155/191J01	A-A-59126/19	AA59126/191J01 (AA59126/19101)
1127-01M-08812	MIL-T-55155/19	M55155/192J01	A-A-59126/19	AA59126/192J01 (AA59126/19201)
1127-01M-08813	MIL-T-55155/19	M55155/193J01	A-A-59126/19	AA59126/193J01 (AA59126/19301)
1127-01M-08814	MIL-T-55155/19	M55155/194J01	A-A-59126/19	AA59126/194J01 (AA59126/19401)

Continued on next page...

MILITARY REFERENCE SPECIFICATIONS CONTINUED:

1127-01M-088XX

PART NUMBER	MIL SPECIFICATION	MIL PART NUMBER	COMMERCIAL ITEM DESCRIPTION (CID) SPECIFICATION	CID PART NUMBER
1127-01M-08815	MIL-T-55155/19	M55155/195J01	A-A-59126/19	AA59126/195J01 (AA59126/19501)
1127-01M-08816	MIL-T-55155/19	M55155/196J01	A-A-59126/19	AA59126/196J01 (AA59126/19601)
1127-01M-08817	MIL-T-55155/19	M55155/197J01	A-A-59126/19	AA59126/197J01 (AA59126/19701)
1127-01M-08818	MIL-T-55155/19	M55155/198J01	A-A-59126/19	AA59126/198J01 (AA59126/19801)
1127-01M-08819	MIL-T-55155/19	M55155/199J01	A-A-59126/19	AA59126/199J01 (AA59126/19901)

1127-01M-095XX

PART NUMBER	MIL SPECIFICATION	MIL PART NUMBER	COMMERCIAL ITEM DESCRIPTION (CID) SPECIFICATION	CID PART NUMBER
1127-01M-09510	MIL-T-55155/19	M55155/190I01	A-A-59126/19	AA59126/190I01
1127-01M-09511	MIL-T-55155/19	M55155/191I01	A-A-59126/19	AA59126/191I01
1127-01M-09512	MIL-T-55155/19	M55155/192I01	A-A-59126/19	AA59126/192I01
1127-01M-09513	MIL-T-55155/19	M55155/193I01	A-A-59126/19	AA59126/193I01
1127-01M-09514	MIL-T-55155/19	M55155/194I01	A-A-59126/19	AA59126/194I01
1127-01M-09515	MIL-T-55155/19	M55155/195I01	A-A-59126/19	AA59126/195I01
1127-01M-09516	MIL-T-55155/19	M55155/196I01	A-A-59126/19	AA59126/196I01
1127-01M-09517	MIL-T-55155/19	M55155/197I01	A-A-59126/19	AA59126/197I01
1127-01M-09518	MIL-T-55155/19	M55155/198I01	A-A-59126/19	AA59126/198I01
1127-01M-09519	MIL-T-55155/19	M55155/199I01	A-A-59126/19	AA59126/199I01

TOOLING:

INSTALLATION TOOL: ARBOR PRESS	INSTALLATION TOOL: ANVIL (ARBOR PRESS OPERATED)	INSTALLATION TOOL: PRESS-FIT / ROLL SWAGE / RIVET PUNCH (ARBOR PRESS OPERATED)	INSTALLATION TOOL: PRESS-FIT (HAND OPERATED)
N/A	N/A	N/A	N/A

NOTES:

<b>DATASHEET NOTES</b>
SCREW IS NOT INCLUDED.
<b>INSTRUCTION NOTES</b>
N/A