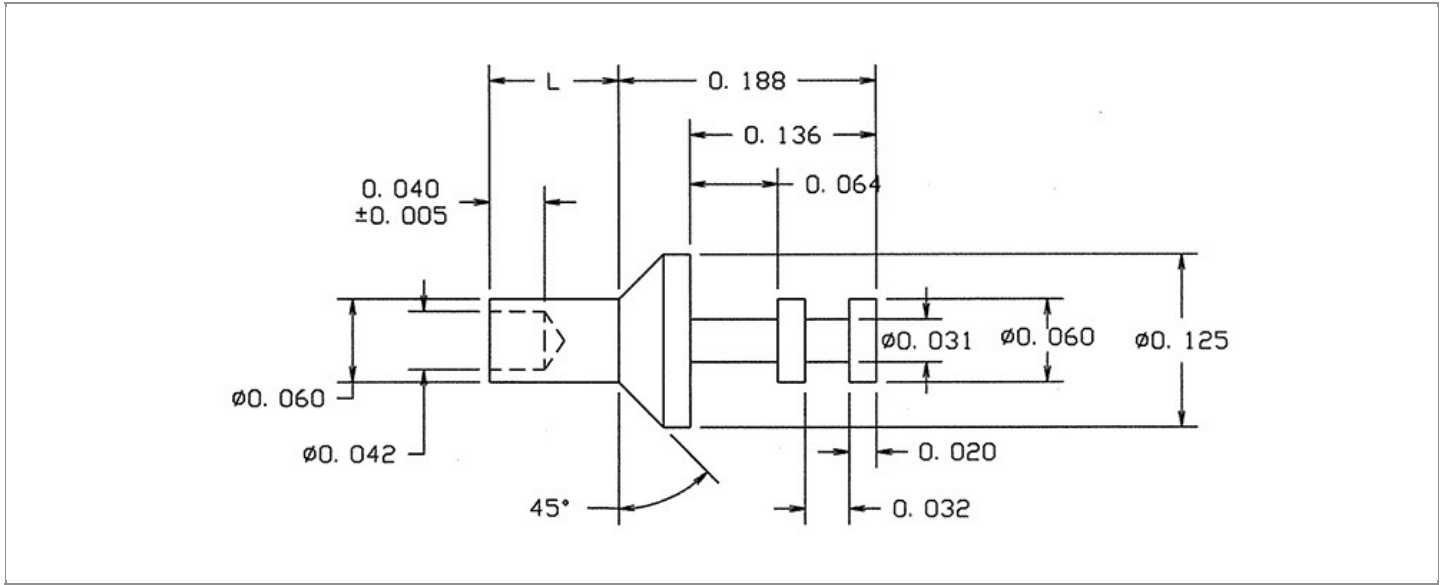


DRAWING NUMBER:	15R-905-X-XX
PRODUCT GROUP:	TERMINALS
SUB-GROUP:	MILITARY NON-INSULATED TERMINALS
DESCRIPTION:	NON-INSULATED DOUBLE TURRET TERMINAL



BOARD / PANEL MOUNTING METHOD	MOUNTING HOLE SIZE	DRILL SIZE	FEED THRU COMBINATION
SWAGE MOUNT	0.0635" ± 0.001	#52	N/A

PART NO. STRUCTURE:

15R-905 - X - XX
 PART SERIES DIMENSION FINISH

MATERIAL OPTIONS:

15R-905-X-XX

COMPONENT	MATERIAL	MATERIAL AND SPECIFICATION
TERMINAL	PHOSPHOR BRONZE	PHOSPHOR BRONZE PER ASTM B139, ALLOY C54400

DIMENSION OPTIONS:

15R-905-X-XX

DIMENSION	K	OVERALL LENGTH	SHANK LENGTH (L)	BOARD/PANEL THICKNESS
1	N/A	0.250"	0.062"	1/32"
2	N/A	0.282"	0.094"	1/16"
3	N/A	0.313"	0.125"	3/32"
4	N/A	0.344"	0.156"	1/8"

FINISH - PLATING OPTIONS:

15R-905-X-**XX**

FINISH CODE	COMPONENT	FINISH	FINISH AND SPECIFICATION
05	TERMINAL	ELECTRO-SOLDER	0.000300"MIN. ELECTRO-SOLDER PER SAE-AMS-P-81728 OVER 0.000100"MIN. COPPER PER SAE-AMS-2418
088	TERMINAL	BRIGHT TIN-LEAD	0.000300"MIN. BRIGHT TIN-LEAD (Sn93%-Pb7%) PER ASTM B545 OVER 0.000100"MIN. COPPER PER SAE-AMS-2418
095	TERMINAL	HOT SOLDER DIP	0.000100"MIN. HOT SOLDER DIP USING Sn60 PER IPC-J-STD-006 OVER 0.000100"MIN. COPPER PER SAE-AMS-2418

TOLERANCES:*

DECIMAL	FRACTIONAL	ANGULAR	DRAWING ORIGATION DATE	LAST MODIFICATION DATE
± 0.005	± 1/64	± 3 °	8/7/1998	3/1/2017

*All dimensions are in inches.

RoHS COMPLIANCE:

15R-905-1-XX

PART NUMBER	RoHS COMPLIANT
15R-905-1-05	NO
15R-905-1-088	NO
15R-905-1-095	NO

15R-905-2-XX

PART NUMBER	RoHS COMPLIANT
15R-905-2-05	NO
15R-905-2-088	NO
15R-905-2-095	NO

15R-905-3-XX

PART NUMBER	RoHS COMPLIANT
15R-905-3-05	NO
15R-905-3-088	NO
15R-905-3-095	NO

15R-905-4-XX

PART NUMBER	RoHS COMPLIANT
15R-905-4-05	NO
15R-905-4-088	NO
15R-905-4-095	NO

MILITARY REFERENCE SPECIFICATIONS:

15R-905-1-XX

PART NUMBER	MIL SPECIFICATION	MIL PART NUMBER	COMMERCIAL ITEM DESCRIPTION (CID) SPECIFICATION	CID PART NUMBER
15R-905-1-05	MIL-T-55155/23	M55155/23XB01 (M55155/23-1Z; SE23XC01Z)	A-A-59126/23	AA59126/23XB01
15R-905-1-088	MIL-T-55155/23	M55155/23XD01	A-A-59126/23	AA59126/23XD01
15R-905-1-095	MIL-T-55155/23	M55155/23XC01	A-A-59126/23	AA59126/23XC01

Continued on next page...

MILITARY REFERENCE SPECIFICATIONS CONTINUED:

15R-905-2-XX

PART NUMBER	MIL SPECIFICATION	MIL PART NUMBER	COMMERCIAL ITEM DESCRIPTION (CID) SPECIFICATION	CID PART NUMBER
15R-905-2-05	MIL-T-55155/23	M55155/23XB02 (M55155/23-2Z; SE23XC02Z)	A-A-59126/23	AA59126/23XB02
15R-905-2-088	MIL-T-55155/23	M55155/23XD02	A-A-59126/23	AA59126/23XD02
15R-905-2-095	MIL-T-55155/23	M55155/23XC02	A-A-59126/23	AA59126/23XC02

15R-905-3-XX

PART NUMBER	MIL SPECIFICATION	MIL PART NUMBER	COMMERCIAL ITEM DESCRIPTION (CID) SPECIFICATION	CID PART NUMBER
15R-905-3-05	MIL-T-55155/23	M55155/23XB03 (M55155/23-3Z; SE23XC03Z)	A-A-59126/23	AA59126/23XB03
15R-905-3-088	MIL-T-55155/23	M55155/23XD03	A-A-59126/23	AA59126/23XD03
15R-905-3-095	MIL-T-55155/23	M55155/23XC03	A-A-59126/23	AA59126/23XC03

15R-905-4-XX

PART NUMBER	MIL SPECIFICATION	MIL PART NUMBER	COMMERCIAL ITEM DESCRIPTION (CID) SPECIFICATION	CID PART NUMBER
15R-905-4-05	MIL-T-55155/23	M55155/23XB04 (M55155/23-4Z; SE23XC04Z)	A-A-59126/23	AA59126/23XB04
15R-905-4-088	MIL-T-55155/23	M55155/23XD04	A-A-59126/23	AA59126/23XD04
15R-905-4-095	MIL-T-55155/23	M55155/23XC04	A-A-59126/23	AA59126/23XC04

TOOLING:

INSTALLATION TOOL: ARBOR PRESS	INSTALLATION TOOL: ANVIL (ARBOR PRESS OPERATED)	INSTALLATION TOOL: PRESS-FIT / ROLL SWAGE / RIVET PUNCH (ARBOR PRESS OPERATED)	INSTALLATION TOOL: FLARE SWAGE PUNCH (ARBOR PRESS OPERATED)
TM1	TA125-63-20	TP62-44	TFLP90-150

NOTES:

DATASHEET NOTES
N/A
INSTRUCTION NOTES
SEE GENERAL SWAGING INSTALLATION INSTRUCTION ON CONCORD ELECTRONICS' WEBSITE WWW.CONCORD-ELECTRONICS.COM