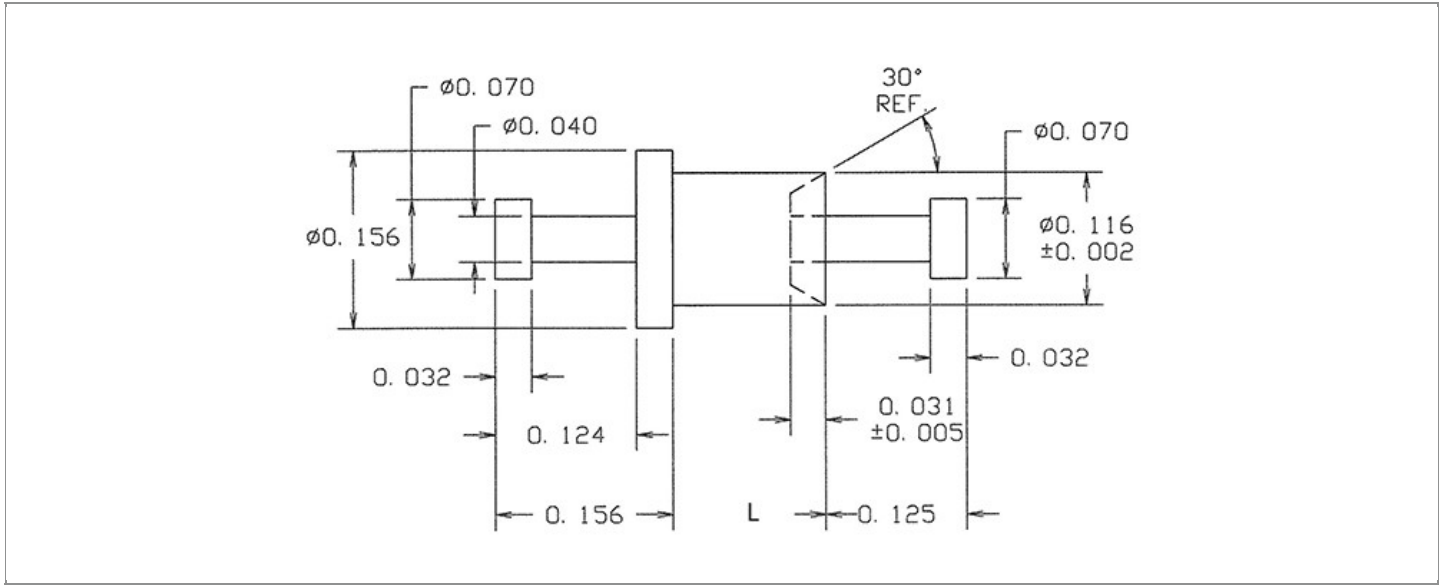


DRAWING NUMBER:	15R-576-X-XX
PRODUCT GROUP:	TERMINALS
SUB-GROUP:	MILITARY NON-INSULATED TERMINALS
DESCRIPTION:	NON-INSULATED FEED THRU (TURRET/TURRET) TERMINAL



BOARD / PANEL MOUNTING METHOD	MOUNTING HOLE SIZE	DRILL SIZE	FEED THRU COMBINATION
SWAGE MOUNT	0.120" ± 0.001	#31	TURRET/TURRET

PART NO. STRUCTURE:

15R-576 - X - XX
 PART SERIES DIMENSION FINISH

MATERIAL OPTIONS:

15R-576-X-XX

COMPONENT	MATERIAL	MATERIAL AND SPECIFICATION
TERMINAL	PHOSPHOR BRONZE	PHOSPHOR BRONZE PER ASTM B139, ALLOY C54400

DIMENSION OPTIONS:

15R-576-X-XX

DIMENSION	K	OVERALL LENGTH	SHANK LENGTH (L)	BOARD/PANEL THICKNESS
2	N/A	0.386"	0.105"	1/16"
3	N/A	0.416"	0.135"	3/32"
4	N/A	0.446"	0.165"	1/8"

FINISH - PLATING OPTIONS:

15R-576-X-XX

FINISH CODE	COMPONENT	FINISH	FINISH AND SPECIFICATION
05	TERMINAL	ELECTRO-SOLDER	0.000300"MIN. ELECTRO-SOLDER PER SAE-AMS-P-81728 OVER 0.000100"MIN. COPPER PER SAE-AMS-2418
088	TERMINAL	BRIGHT TIN-LEAD	0.000300"MIN. BRIGHT TIN-LEAD (Sn93%-Pb7%) PER ASTM B545 OVER 0.000100"MIN. COPPER PER SAE-AMS-2418
095	TERMINAL	HOT SOLDER DIP	0.000100"MIN. HOT SOLDER DIP USING Sn60 PER IPC-J-STD-006 OVER 0.000100"MIN. COPPER PER SAE-AMS-2418

TOLERANCES:*

DECIMAL	FRACTIONAL	ANGULAR	DRAWING ORIGATION DATE	LAST MODIFICATION DATE
± 0.005	N/A	± 3 °	10/11/2000	3/1/2017

*All dimensions are in inches.

RoHS COMPLIANCE:

15R-576-2-XX

PART NUMBER	RoHS COMPLIANT
15R-576-2-05	NO
15R-576-2-088	NO
15R-576-2-095	NO

15R-576-3-XX

PART NUMBER	RoHS COMPLIANT
15R-576-3-05	NO
15R-576-3-088	NO
15R-576-3-095	NO

15R-576-4-XX

PART NUMBER	RoHS COMPLIANT
15R-576-4-05	NO
15R-576-4-088	NO
15R-576-4-095	NO

MILITARY REFERENCE SPECIFICATIONS:

15R-576-2-XX

PART NUMBER	MIL SPECIFICATION	MIL PART NUMBER	COMMERCIAL ITEM DESCRIPTION (CID) SPECIFICATION	CID PART NUMBER
15R-576-2-05	MIL-T-55155/13	M55155/13XB04 (M55155/13-4Z; SE13XC04Z)	A-A-59126/13	AA59126/13XB04
15R-576-2-088	MIL-T-55155/13	M55155/13XD04	A-A-59126/13	AA59126/13XD04
15R-576-2-095	MIL-T-55155/13	M55155/13XC04	A-A-59126/13	AA59126/13XC04

15R-576-3-XX

PART NUMBER	MIL SPECIFICATION	MIL PART NUMBER	COMMERCIAL ITEM DESCRIPTION (CID) SPECIFICATION	CID PART NUMBER
15R-576-3-05	MIL-T-55155/13	M55155/13XB05 (M55155/13-5Z; SE13XC05Z)	A-A-59126/13	AA59126/13XB05
15R-576-3-088	MIL-T-55155/13	M55155/13XD05	A-A-59126/13	AA59126/13XD05
15R-576-3-095	MIL-T-55155/13	M55155/13XC05	A-A-59126/13	AA59126/13XC05

Continued on next page...

MILITARY REFERENCE SPECIFICATIONS CONTINUED:

15R-576-4-XX

PART NUMBER	MIL SPECIFICATION	MIL PART NUMBER	COMMERCIAL ITEM DESCRIPTION (CID) SPECIFICATION	CID PART NUMBER
15R-576-4-05	MIL-T-55155/13	M55155/13XB06 (M55155/13-6Z; SE13XC06Z)	A-A-59126/13	AA59126/13XB06
15R-576-4-088	MIL-T-55155/13	M55155/13XD06	A-A-59126/13	AA59126/13XD06
15R-576-4-095	MIL-T-55155/13	M55155/13XC06	A-A-59126/13	AA59126/13XC06

TOOLING:

INSTALLATION TOOL: ARBOR PRESS	INSTALLATION TOOL: ANVIL (ARBOR PRESS OPERATED)	INSTALLATION TOOL: PRESS-FIT / ROLL SWAGE / RIVET PUNCH (ARBOR PRESS OPERATED)	INSTALLATION TOOL: FLARE SWAGE PUNCH (ARBOR PRESS OPERATED)
TM1	TA156-70-32	TP116-T70	N/A

NOTES:

DATASHEET NOTES

N/A

INSTRUCTION NOTES

SEE GENERAL SWAGING INSTALLATION INSTRUCTION ON CONCORD ELECTRONICS' WEBSITE WWW.CONCORD-ELECTRONICS.COM