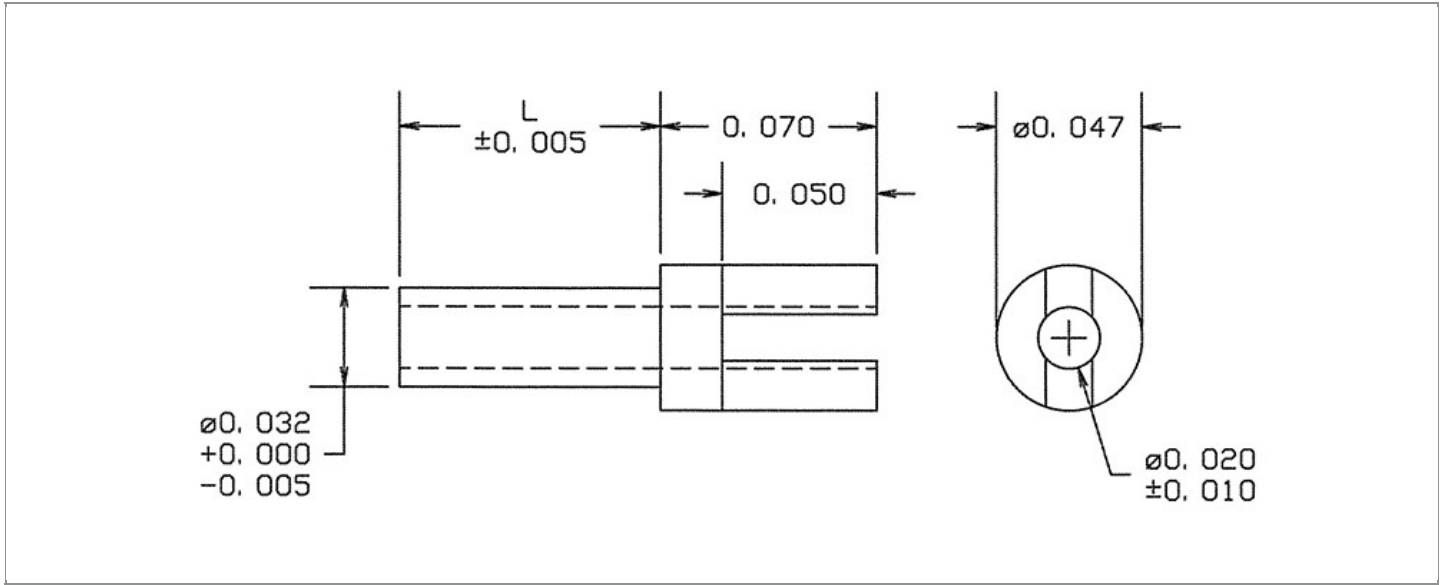


<b>DRAWING NUMBER:</b>	<b>15R-499-X-XX</b>
<b>PRODUCT GROUP:</b>	TERMINALS
<b>SUB-GROUP:</b>	MILITARY NON-INSULATED TERMINALS
<b>DESCRIPTION:</b>	NON-INSULATED THRU-HOLE SLOTTED TERMINAL



BOARD / PANEL MOUNTING METHOD	MOUNTING HOLE SIZE	DRILL SIZE	FEED THRU COMBINATION
SWAGE MOUNT	$0.033" \pm 0.001$	#66	N/A

**PART NO. STRUCTURE:**

15R-499 - X - XX  
 PART SERIES    DIMENSION    FINISH

**MATERIAL OPTIONS:**

15R-499-X-XX

COMPONENT	MATERIAL	MATERIAL AND SPECIFICATION
TERMINAL	PHOSPHOR BRONZE	PHOSPHOR BRONZE PER ASTM B139, ALLOY C54400

**DIMENSION OPTIONS:**

15R-499-X-XX

DIMENSION	K	OVERALL LENGTH	SHANK LENGTH (L)	BOARD/PANEL THICKNESS
1	N/A	0.123"	0.053"	1/32"
2	N/A	0.154"	0.084"	1/16"
3	N/A	0.185"	0.115"	3/32"

FINISH - PLATING OPTIONS:

15R-499-X-**XX**

FINISH CODE	COMPONENT	FINISH	FINISH AND SPECIFICATION
05	TERMINAL	ELECTRO-SOLDER	0.000300"MIN. ELECTRO-SOLDER PER SAE-AMS-P-81728 OVER 0.000100"MIN. COPPER PER SAE-AMS-2418
088	TERMINAL	BRIGHT TIN-LEAD	0.000300"MIN. BRIGHT TIN-LEAD (Sn93%-Pb7%) PER ASTM B545 OVER 0.000100"MIN. COPPER PER SAE-AMS-2418
095	TERMINAL	HOT SOLDER DIP	0.000100"MIN. HOT SOLDER DIP USING Sn60 PER IPC-J-STD-006 OVER 0.000100"MIN. COPPER PER SAE-AMS-2418

TOLERANCES:\*

DECIMAL	FRACTIONAL	ANGULAR	DRAWING ORIGATION DATE	LAST MODIFICATION DATE
± 0.010	N/A	N/A	10/28/2002	3/1/2017

\*All dimensions are in inches.

RoHS COMPLIANCE:

15R-499-1-XX

PART NUMBER	RoHS COMPLIANT
15R-499-1-05	NO
15R-499-1-088	NO
15R-499-1-095	NO

15R-499-2-XX

PART NUMBER	RoHS COMPLIANT
15R-499-2-05	NO
15R-499-2-088	NO
15R-499-2-095	NO

15R-499-3-XX

PART NUMBER	RoHS COMPLIANT
15R-499-3-05	NO
15R-499-3-088	NO
15R-499-3-095	NO

MILITARY REFERENCE SPECIFICATIONS:

15R-499-1-XX

PART NUMBER	MIL SPECIFICATION	MIL PART NUMBER	COMMERCIAL ITEM DESCRIPTION (CID) SPECIFICATION	CID PART NUMBER
15R-499-1-05	MIL-T-55155/24	M55155/24XB15 (M55155/24-15Z; SE24XC15Z)	A-A-59126/24	AA59126/24XB15
15R-499-1-088	MIL-T-55155/24	M55155/24XD15	A-A-59126/24	AA59126/24XD15
15R-499-1-095	MIL-T-55155/24	M55155/24XC15	A-A-59126/24	AA59126/24XC15

15R-499-2-XX

PART NUMBER	MIL SPECIFICATION	MIL PART NUMBER	COMMERCIAL ITEM DESCRIPTION (CID) SPECIFICATION	CID PART NUMBER
15R-499-2-05	MIL-T-55155/24	M55155/24XB16 (M55155/24-16Z; SE24XC16Z)	A-A-59126/24	AA59126/24XB16
15R-499-2-088	MIL-T-55155/24	M55155/24XD16	A-A-59126/24	AA59126/24XD16
15R-499-2-095	MIL-T-55155/24	M55155/24XC16	A-A-59126/24	AA59126/24XC16

Continued on next page...

MILITARY REFERENCE SPECIFICATIONS CONTINUED:

15R-499-3-XX

PART NUMBER	MIL SPECIFICATION	MIL PART NUMBER	COMMERCIAL ITEM DESCRIPTION (CID) SPECIFICATION	CID PART NUMBER
15R-499-3-05	MIL-T-55155/24	M55155/24XB17 (M55155/24-17Z; SE24XC17Z)	A-A-59126/24	AA59126/24XB17
15R-499-3-088	MIL-T-55155/24	M55155/24XD17	A-A-59126/24	AA59126/24XD17
15R-499-3-095	MIL-T-55155/24	M55155/24XC17	A-A-59126/24	AA59126/24XC17

TOOLING:

INSTALLATION TOOL: ARBOR PRESS	INSTALLATION TOOL: ANVIL (ARBOR PRESS OPERATED)	INSTALLATION TOOL: PRESS-FIT / ROLL SWAGE / RIVET PUNCH (ARBOR PRESS OPERATED)	INSTALLATION TOOL: FLARE SWAGE PUNCH (ARBOR PRESS OPERATED)
TM1	TA10-499	TP30-20	TFLP90-150

NOTES:

<b>DATASHEET NOTES</b>
------------------------

N/A

<b>INSTRUCTION NOTES</b>
--------------------------

SEE GENERAL SWAGING INSTALLATION INSTRUCTION ON CONCORD ELECTRONICS' WEBSITE [WWW.CONCORD-ELECTRONICS.COM](http://WWW.CONCORD-ELECTRONICS.COM)