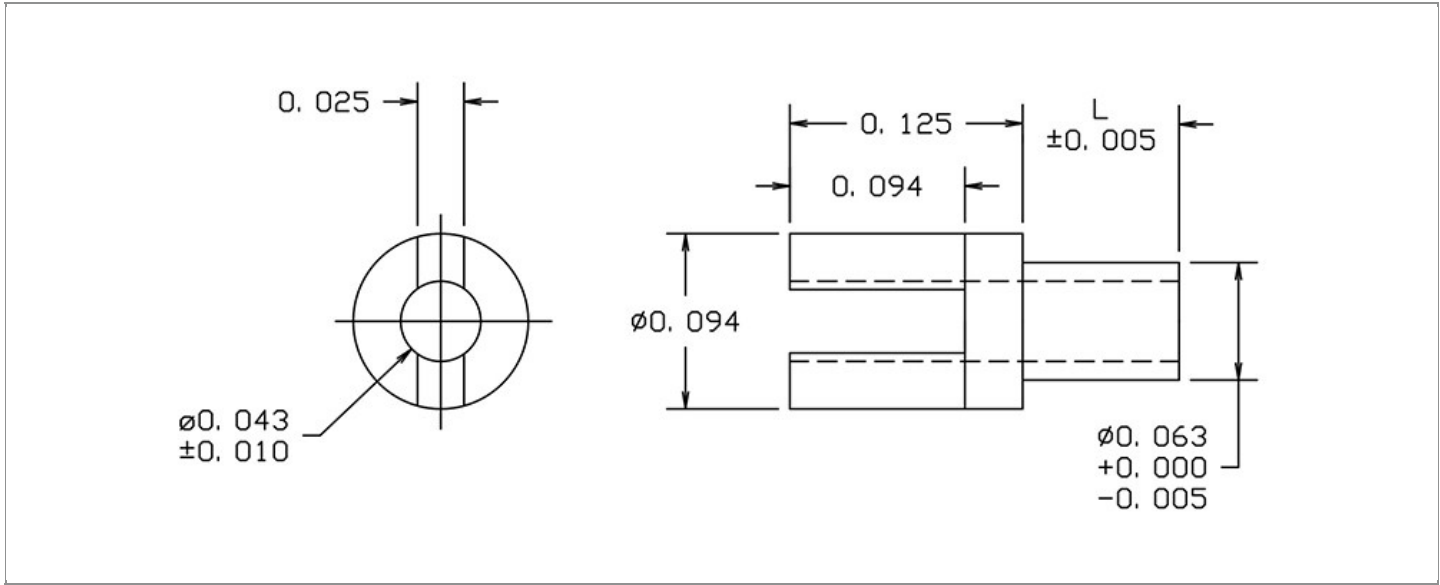


DRAWING NUMBER:	15R-493-X-XX
PRODUCT GROUP:	TERMINALS
SUB-GROUP:	MILITARY NON-INSULATED TERMINALS
DESCRIPTION:	NON-INSULATED THRU-HOLE SLOTTED TERMINAL



BOARD / PANEL MOUNTING METHOD	MOUNTING HOLE SIZE	DRILL SIZE	FEED THRU COMBINATION
SWAGE MOUNT	0.0635" ± 0.001	#52	N/A

PART NO. STRUCTURE:

15R-493 - X - XX
 PART SERIES DIMENSION FINISH

MATERIAL OPTIONS:

15R-493-X-XX

COMPONENT	MATERIAL	MATERIAL AND SPECIFICATION
TERMINAL	PHOSPHOR BRONZE	PHOSPHOR BRONZE PER ASTM B139, ALLOY C54400

DIMENSION OPTIONS:

15R-493-X-XX

DIMENSION	K	OVERALL LENGTH	SHANK LENGTH (L)	BOARD/PANEL THICKNESS
1	N/A	0.178"	0.053"	1/32"
2	N/A	0.209"	0.084"	1/16"
3	N/A	0.240"	0.115"	3/32"
4	N/A	0.272"	0.147"	1/8"
11	N/A	0.162"	0.037"	1/64"

FINISH - PLATING OPTIONS:

15R-493-X-**XX**

FINISH CODE	COMPONENT	FINISH	FINISH AND SPECIFICATION
05	TERMINAL	ELECTRO-SOLDER	0.000300"MIN. ELECTRO-SOLDER PER SAE-AMS-P-81728 OVER 0.000100"MIN. COPPER PER SAE-AMS-2418
088	TERMINAL	BRIGHT TIN-LEAD	0.000300"MIN. BRIGHT TIN-LEAD (Sn93%-Pb7%) PER ASTM B545 OVER 0.000100"MIN. COPPER PER SAE-AMS-2418
095	TERMINAL	HOT SOLDER DIP	0.000100"MIN. HOT SOLDER DIP USING Sn60 PER IPC-J-STD-006 OVER 0.000100"MIN. COPPER PER SAE-AMS-2418

TOLERANCES:*

DECIMAL	FRACTIONAL	ANGULAR	DRAWING ORIGATION DATE	LAST MODIFICATION DATE
± 0.010	N/A	± 3 °	4/29/1998	3/1/2017

*All dimensions are in inches.

RoHS COMPLIANCE:

15R-493-1-XX

PART NUMBER	RoHS COMPLIANT
15R-493-1-05	NO
15R-493-1-088	NO
15R-493-1-095	NO

15R-493-2-XX

PART NUMBER	RoHS COMPLIANT
15R-493-2-05	NO
15R-493-2-088	NO
15R-493-2-095	NO

15R-493-3-XX

PART NUMBER	RoHS COMPLIANT
15R-493-3-05	NO
15R-493-3-088	NO
15R-493-3-095	NO

15R-493-4-XX

PART NUMBER	RoHS COMPLIANT
15R-493-4-05	NO
15R-493-4-088	NO
15R-493-4-095	NO

15R-493-11-XX

PART NUMBER	RoHS COMPLIANT
15R-493-11-05	NO
15R-493-11-088	NO
15R-493-11-095	NO

MILITARY REFERENCE SPECIFICATIONS:

15R-493-1-XX

PART NUMBER	MIL SPECIFICATION	MIL PART NUMBER	COMMERCIAL ITEM DESCRIPTION (CID) SPECIFICATION	CID PART NUMBER
15R-493-1-05	MIL-T-55155/24	M55155/24XB06 (M55155/24-6Z; SE24XC06Z)	A-A-59126/24	AA59126/24XB06
15R-493-1-088	MIL-T-55155/24	M55155/24XD06	A-A-59126/24	AA59126/24XD06
15R-493-1-095	MIL-T-55155/24	M55155/24XC06	A-A-59126/24	AA59126/24XC06

Continued on next page...

MILITARY REFERENCE SPECIFICATIONS CONTINUED:

15R-493-2-XX

PART NUMBER	MIL SPECIFICATION	MIL PART NUMBER	COMMERCIAL ITEM DESCRIPTION (CID) SPECIFICATION	CID PART NUMBER
15R-493-2-05	MIL-T-55155/24	M55155/24XB07 (M55155/24-7Z; SE24XC07Z)	A-A-59126/24	AA59126/24XB07
15R-493-2-088	MIL-T-55155/24	M55155/24XD07	A-A-59126/24	AA59126/24XD07
15R-493-2-095	MIL-T-55155/24	M55155/24XC07	A-A-59126/24	AA59126/24XC07

15R-493-3-XX

PART NUMBER	MIL SPECIFICATION	MIL PART NUMBER	COMMERCIAL ITEM DESCRIPTION (CID) SPECIFICATION	CID PART NUMBER
15R-493-3-05	MIL-T-55155/24	M55155/24XB08 (M55155/24-8Z; SE24XC08Z)	A-A-59126/24	AA59126/24XB08
15R-493-3-088	MIL-T-55155/24	M55155/24XD08	A-A-59126/24	AA59126/24XD08
15R-493-3-095	MIL-T-55155/24	M55155/24XC08	A-A-59126/24	AA59126/24XC08

15R-493-4-XX

PART NUMBER	MIL SPECIFICATION	MIL PART NUMBER	COMMERCIAL ITEM DESCRIPTION (CID) SPECIFICATION	CID PART NUMBER
15R-493-4-05	MIL-T-55155/24	M55155/24XB09 (M55155/24-9Z; SE24XC09Z)	A-A-59126/24	AA59126/24XB09
15R-493-4-088	MIL-T-55155/24	M55155/24XD09	A-A-59126/24	AA59126/24XD09
15R-493-4-095	MIL-T-55155/24	M55155/24XC09	A-A-59126/24	AA59126/24XC09

15R-493-11-XX

PART NUMBER	MIL SPECIFICATION	MIL PART NUMBER	COMMERCIAL ITEM DESCRIPTION (CID) SPECIFICATION	CID PART NUMBER
15R-493-11-05	MIL-T-55155/24	M55155/24XB05 (M55155/24-5Z; SE24XC05Z)	A-A-59126/24	AA59126/24XB05
15R-493-11-088	MIL-T-55155/24	M55155/24XD05	A-A-59126/24	AA59126/24XD05
15R-493-11-095	MIL-T-55155/24	M55155/24XC05	A-A-59126/24	AA59126/24XC05

TOOLING:

INSTALLATION TOOL: ARBOR PRESS	INSTALLATION TOOL: ANVIL (ARBOR PRESS OPERATED)	INSTALLATION TOOL: PRESS-FIT / ROLL SWAGE / RIVET PUNCH (ARBOR PRESS OPERATED)	INSTALLATION TOOL: FLARE SWAGE PUNCH (ARBOR PRESS OPERATED)
TM1	TA10-493	TP62-44	TFLP90-150

NOTES:

DATASHEET NOTES

N/A

INSTRUCTION NOTES

SEE GENERAL SWAGING INSTALLATION INSTRUCTION ON CONCORD ELECTRONICS' WEBSITE WWW.CONCORD-ELECTRONICS.COM
