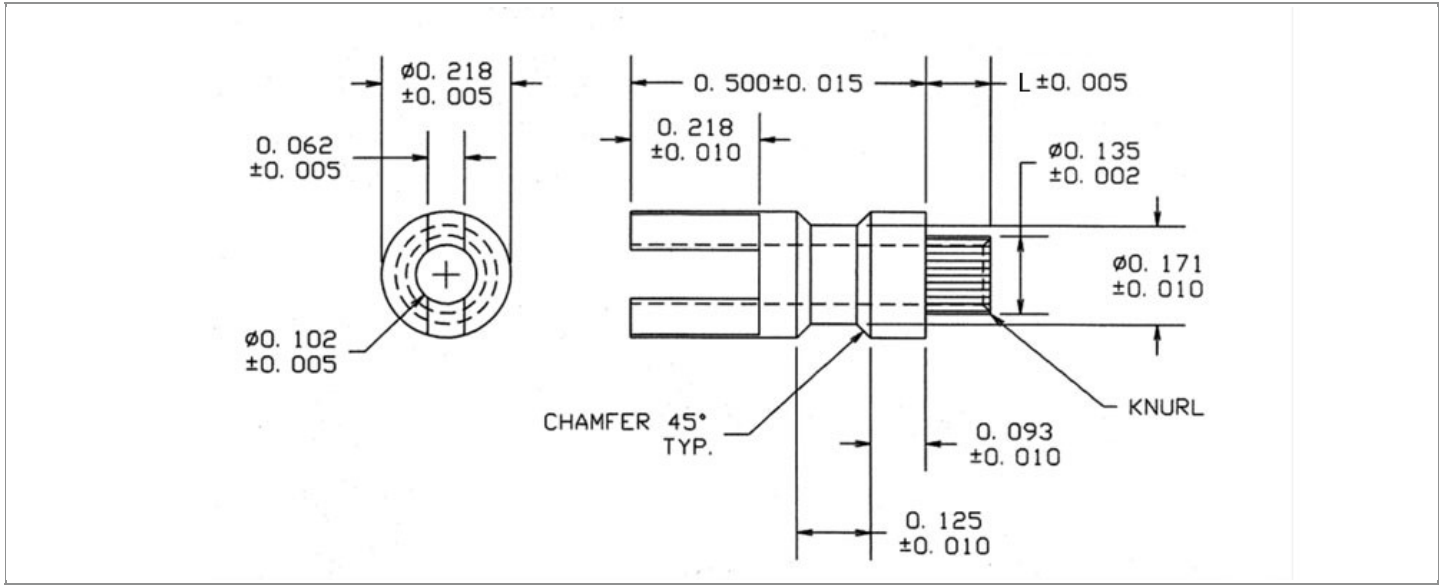


DRAWING NUMBER:	15R-407-X-XX
PRODUCT GROUP:	TERMINALS
SUB-GROUP:	MILITARY NON-INSULATED TERMINALS
DESCRIPTION:	NON-INSULATED THRU-HOLE KNURLED SLOTTED TERMINAL



BOARD / PANEL MOUNTING METHOD	MOUNTING HOLE SIZE	DRILL SIZE	FEED THRU COMBINATION
SWAGE MOUNT	0.140" ± 0.001	#28	N/A

PART NO. STRUCTURE:

15R-407 - X - XX
 PART SERIES DIMENSION FINISH

MATERIAL OPTIONS:

15R-407-X-XX

COMPONENT	MATERIAL	MATERIAL AND SPECIFICATION
TERMINAL	PHOSPHOR BRONZE	PHOSPHOR BRONZE PER ASTM B139, ALLOY C54400

DIMENSION OPTIONS:

15R-407-X-XX

DIMENSION	K	OVERALL LENGTH	SHANK LENGTH (L)	BOARD/PANEL THICKNESS
2	N/A	0.609"	0.109"	1/16"
3	N/A	0.641"	0.141"	3/32"
4	N/A	0.672"	0.171"	1/8"

FINISH - PLATING OPTIONS:

15R-407-X-**XX**

FINISH CODE	COMPONENT	FINISH	FINISH AND SPECIFICATION
05	TERMINAL	ELECTRO-SOLDER	0.000300"MIN. ELECTRO-SOLDER PER SAE-AMS-P-81728 OVER 0.000100"MIN. COPPER PER SAE-AMS-2418
088	TERMINAL	BRIGHT TIN-LEAD	0.000300"MIN. BRIGHT TIN-LEAD (Sn93%-Pb7%) PER ASTM B545 OVER 0.000100"MIN. COPPER PER SAE-AMS-2418
095	TERMINAL	HOT SOLDER DIP	0.000100"MIN. HOT SOLDER DIP USING Sn60 PER IPC-J-STD-006 OVER 0.000100"MIN. COPPER PER SAE-AMS-2418

TOLERANCES:*

DECIMAL	FRACTIONAL	ANGULAR	DRAWING ORIGATION DATE	LAST MODIFICATION DATE
N/A	N/A	N/A	7/25/1998	3/1/2017

*All dimensions are in inches.

RoHS COMPLIANCE:

15R-407-2-XX

PART NUMBER	RoHS COMPLIANT
15R-407-2-05	NO
15R-407-2-088	NO
15R-407-2-095	NO

15R-407-3-XX

PART NUMBER	RoHS COMPLIANT
15R-407-3-05	NO
15R-407-3-088	NO
15R-407-3-095	NO

15R-407-4-XX

PART NUMBER	RoHS COMPLIANT
15R-407-4-05	NO
15R-407-4-088	NO
15R-407-4-095	NO

MILITARY REFERENCE SPECIFICATIONS:

15R-407-2-XX

PART NUMBER	MIL SPECIFICATION	MIL PART NUMBER	COMMERCIAL ITEM DESCRIPTION (CID) SPECIFICATION	CID PART NUMBER
15R-407-2-05	MIL-T-55155/32	M55155/32XB02 (M55155/32-2Z; SE32XC02Z)	A-A-59126/32	AA59126/32XB02
15R-407-2-088	MIL-T-55155/32	M55155/32XD02	A-A-59126/32	AA59126/32XD02
15R-407-2-095	MIL-T-55155/32	M55155/32XC02	A-A-59126/32	AA59126/32XC02

15R-407-3-XX

PART NUMBER	MIL SPECIFICATION	MIL PART NUMBER	COMMERCIAL ITEM DESCRIPTION (CID) SPECIFICATION	CID PART NUMBER
15R-407-3-05	MIL-T-55155/32	M55155/32XB04 (M55155/32-4Z; SE32XC04Z)	A-A-59126/32	AA59126/32XB04
15R-407-3-088	MIL-T-55155/32	M55155/32XD04	A-A-59126/32	AA59126/32XD04
15R-407-3-095	MIL-T-55155/32	M55155/32XC04	A-A-59126/32	AA59126/32XC04

Continued on next page...

MILITARY REFERENCE SPECIFICATIONS CONTINUED:

15R-407-4-XX

PART NUMBER	MIL SPECIFICATION	MIL PART NUMBER	COMMERCIAL ITEM DESCRIPTION (CID) SPECIFICATION	CID PART NUMBER
15R-407-4-05	MIL-T-55155/32	M55155/32XB07 (M55155/32-7Z; SE32XC07Z)	A-A-59126/32	AA59126/32XB07
15R-407-4-088	MIL-T-55155/32	M55155/32XD07	A-A-59126/32	AA59126/32XD07
15R-407-4-095	MIL-T-55155/32	M55155/32XC07	A-A-59126/32	AA59126/32XC07

TOOLING:

INSTALLATION TOOL: ARBOR PRESS	INSTALLATION TOOL: ANVIL (ARBOR PRESS OPERATED)	INSTALLATION TOOL: PRESS-FIT / ROLL SWAGE / RIVET PUNCH (ARBOR PRESS OPERATED)	INSTALLATION TOOL: FLARE SWAGE PUNCH (ARBOR PRESS OPERATED)
TM1	TA10-407	TP135-102	TFLP90-200

NOTES:

DATASHEET NOTES

N/A

INSTRUCTION NOTES

SEE GENERAL SWAGING INSTALLATION INSTRUCTION ON CONCORD ELECTRONICS' WEBSITE WWW.CONCORD-ELECTRONICS.COM