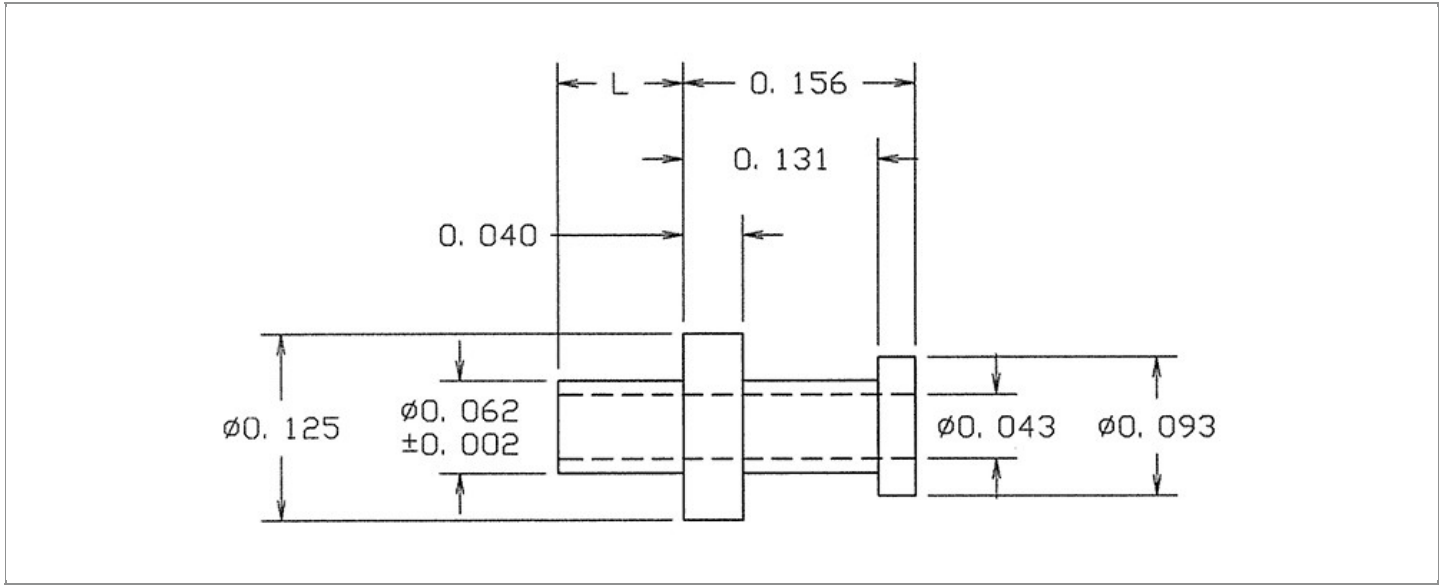


DRAWING NUMBER:	15R-302-X-XX
PRODUCT GROUP:	TERMINALS
SUB-GROUP:	MILITARY NON-INSULATED TERMINALS
DESCRIPTION:	NON-INSULATED THRU-HOLE TURRET TERMINAL



BOARD / PANEL MOUNTING METHOD	MOUNTING HOLE SIZE	DRILL SIZE	FEED THRU COMBINATION
SWAGE MOUNT	0.067" ± 0.001	#51	N/A

PART NO. STRUCTURE:

15R-302 - X - XX
 PART SERIES DIMENSION FINISH

MATERIAL OPTIONS:

15R-302-X-XX

COMPONENT	MATERIAL	MATERIAL AND SPECIFICATION
TERMINAL	PHOSPHOR BRONZE	PHOSPHOR BRONZE PER ASTM B139, ALLOY C54400

DIMENSION OPTIONS:

15R-302-X-XX

DIMENSION	K	OVERALL LENGTH	SHANK LENGTH (L)	BOARD/PANEL THICKNESS
2	N/A	0.240"	0.084"	1/16"
3	N/A	0.271"	0.115"	3/32"
4	N/A	0.303"	0.147"	1/8"

FINISH - PLATING OPTIONS:

15R-302-X-**XX**

FINISH CODE	COMPONENT	FINISH	FINISH AND SPECIFICATION
05	TERMINAL	ELECTRO-SOLDER	0.000300"MIN. ELECTRO-SOLDER PER SAE-AMS-P-81728 OVER 0.000100"MIN. COPPER PER SAE-AMS-2418
088	TERMINAL	BRIGHT TIN-LEAD	0.000300"MIN. BRIGHT TIN-LEAD (Sn93%-Pb7%) PER ASTM B545 OVER 0.000100"MIN. COPPER PER SAE-AMS-2418
095	TERMINAL	HOT SOLDER DIP	0.000100"MIN. HOT SOLDER DIP USING Sn60 PER IPC-J-STD-006 OVER 0.000100"MIN. COPPER PER SAE-AMS-2418

TOLERANCES:*

DECIMAL	FRACTIONAL	ANGULAR	DRAWING ORIGATION DATE	LAST MODIFICATION DATE
± 0.005	N/A	± 3 °	10/28/2002	3/1/2017

*All dimensions are in inches.

RoHS COMPLIANCE:

15R-302-2-XX

PART NUMBER	RoHS COMPLIANT
15R-302-2-05	NO
15R-302-2-088	NO
15R-302-2-095	NO

15R-302-3-XX

PART NUMBER	RoHS COMPLIANT
15R-302-3-05	NO
15R-302-3-088	NO
15R-302-3-095	NO

15R-302-4-XX

PART NUMBER	RoHS COMPLIANT
15R-302-4-05	NO
15R-302-4-088	NO
15R-302-4-095	NO

MILITARY REFERENCE SPECIFICATIONS:

15R-302-2-XX

PART NUMBER	MIL SPECIFICATION	MIL PART NUMBER	COMMERCIAL ITEM DESCRIPTION (CID) SPECIFICATION	CID PART NUMBER
15R-302-2-05	MIL-T-55155/16	M55155/16XB01 (M55155/16-1Z; SE16XC01Z)	A-A-59126/16	AA59126/16XB01
15R-302-2-088	MIL-T-55155/16	M55155/16XD01	A-A-59126/16	AA59126/16XD01
15R-302-2-095	MIL-T-55155/16	M55155/16XC01	A-A-59126/16	AA59126/16XC01

15R-302-3-XX

PART NUMBER	MIL SPECIFICATION	MIL PART NUMBER	COMMERCIAL ITEM DESCRIPTION (CID) SPECIFICATION	CID PART NUMBER
15R-302-3-05	MIL-T-55155/16	M55155/16XB02 (M55155/16-2Z; SE16XC02Z)	A-A-59126/16	AA59126/16XB02
15R-302-3-088	MIL-T-55155/16	M55155/16XD02	A-A-59126/16	AA59126/16XD02
15R-302-3-095	MIL-T-55155/16	M55155/16XC02	A-A-59126/16	AA59126/16XC02

Continued on next page...

MILITARY REFERENCE SPECIFICATIONS CONTINUED:

15R-302-4-XX

PART NUMBER	MIL SPECIFICATION	MIL PART NUMBER	COMMERCIAL ITEM DESCRIPTION (CID) SPECIFICATION	CID PART NUMBER
15R-302-4-05	MIL-T-55155/16	M55155/16XB03 (M55155/16-3Z; SE16XC03Z)	A-A-59126/16	AA59126/16XB03
15R-302-4-088	MIL-T-55155/16	M55155/16XD03	A-A-59126/16	AA59126/16XD03
15R-302-4-095	MIL-T-55155/16	M55155/16XC03	A-A-59126/16	AA59126/16XC03

TOOLING:

INSTALLATION TOOL: ARBOR PRESS	INSTALLATION TOOL: ANVIL (ARBOR PRESS OPERATED)	INSTALLATION TOOL: PRESS-FIT / ROLL SWAGE / RIVET PUNCH (ARBOR PRESS OPERATED)	INSTALLATION TOOL: FLARE SWAGE PUNCH (ARBOR PRESS OPERATED)
TM1	TA125-94-23	TP62-44	TFLP90-150

NOTES:

DATASHEET NOTES
N/A

INSTRUCTION NOTES
SEE GENERAL SWAGING INSTALLATION INSTRUCTION ON CONCORD ELECTRONICS' WEBSITE WWW.CONCORD-ELECTRONICS.COM