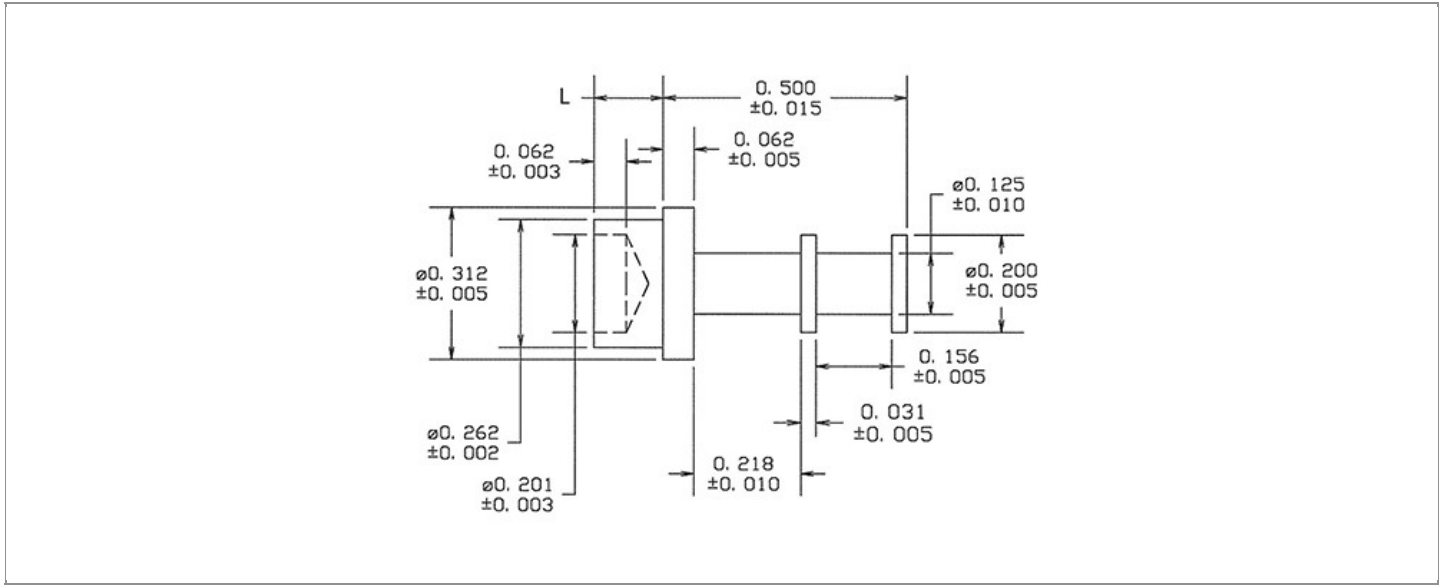


<b>DRAWING NUMBER:</b>	<b>15R-211-X-XX</b>
<b>PRODUCT GROUP:</b>	TERMINALS
<b>SUB-GROUP:</b>	MILITARY NON-INSULATED TERMINALS
<b>DESCRIPTION:</b>	NON-INSULATED DOUBLE TURRET TERMINAL



BOARD / PANEL MOUNTING METHOD	MOUNTING HOLE SIZE	DRILL SIZE	FEED THRU COMBINATION
SWAGE MOUNT	0.266" ± 0.001	H	N/A

**PART NO. STRUCTURE:**

15R-211 - X - XX  
 PART SERIES    DIMENSION    FINISH

**MATERIAL OPTIONS:**

15R-211-X-XX

COMPONENT	MATERIAL	MATERIAL AND SPECIFICATION
TERMINAL	PHOSPHOR BRONZE	PHOSPHOR BRONZE PER ASTM B139, ALLOY C54400

**DIMENSION OPTIONS:**

15R-211-X-XX

DIMENSION	K	OVERALL LENGTH	SHANK LENGTH (L)	BOARD/PANEL THICKNESS
2	N/A	0.609"	0.109"	1/16"
3	N/A	0.640"	0.140"	3/32"
4	N/A	0.671"	0.171"	1/8"
6	N/A	0.734"	0.234"	3/16"
8	N/A	0.796"	0.296"	1/4"

FINISH - PLATING OPTIONS:

15R-211-X-**XX**

FINISH CODE	COMPONENT	FINISH	FINISH AND SPECIFICATION
05	TERMINAL	ELECTRO-SOLDER	0.000300"MIN. ELECTRO-SOLDER PER SAE-AMS-P-81728 OVER 0.000100"MIN. COPPER PER SAE-AMS-2418
088	TERMINAL	BRIGHT TIN-LEAD	0.000300"MIN. BRIGHT TIN-LEAD (Sn93%-Pb7%) PER ASTM B545 OVER 0.000100"MIN. COPPER PER SAE-AMS-2418
095	TERMINAL	HOT SOLDER DIP	0.000100"MIN. HOT SOLDER DIP USING Sn60 PER IPC-J-STD-006 OVER 0.000100"MIN. COPPER PER SAE-AMS-2418

TOLERANCES:\*

DECIMAL	FRACTIONAL	ANGULAR	DRAWING ORIGATION DATE	LAST MODIFICATION DATE
N/A	N/A	± 3 °	2/4/2002	3/1/2017

\*All dimensions are in inches.

RoHS COMPLIANCE:

15R-211-2-XX

PART NUMBER	RoHS COMPLIANT
15R-211-2-05	NO
15R-211-2-088	NO
15R-211-2-095	NO

15R-211-3-XX

PART NUMBER	RoHS COMPLIANT
15R-211-3-05	NO
15R-211-3-088	NO
15R-211-3-095	NO

15R-211-4-XX

PART NUMBER	RoHS COMPLIANT
15R-211-4-05	NO
15R-211-4-088	NO
15R-211-4-095	NO

15R-211-6-XX

PART NUMBER	RoHS COMPLIANT
15R-211-6-05	NO
15R-211-6-088	NO
15R-211-6-095	NO

15R-211-8-XX

PART NUMBER	RoHS COMPLIANT
15R-211-8-05	NO
15R-211-8-088	NO
15R-211-8-095	NO

MILITARY REFERENCE SPECIFICATIONS:

15R-211-2-XX

PART NUMBER	MIL SPECIFICATION	MIL PART NUMBER	COMMERCIAL ITEM DESCRIPTION (CID) SPECIFICATION	CID PART NUMBER
15R-211-2-05	MIL-T-55155/30	M55155/30XB08 (M55155/30-8Z; SE30XC08Z)	A-A-59126/30	AA59126/30XB08
15R-211-2-088	MIL-T-55155/30	M55155/30XD08	A-A-59126/30	AA59126/30XD08
15R-211-2-095	MIL-T-55155/30	M55155/30XC08	A-A-59126/30	AA59126/30XC08

Continued on next page...

MILITARY REFERENCE SPECIFICATIONS CONTINUED:

15R-211-3-XX

PART NUMBER	MIL SPECIFICATION	MIL PART NUMBER	COMMERCIAL ITEM DESCRIPTION (CID) SPECIFICATION	CID PART NUMBER
15R-211-3-05	MIL-T-55155/30	M55155/30XB12 (M55155/30-12Z; SE30XC12Z)	A-A-59126/30	AA59126/30XB12
15R-211-3-088	MIL-T-55155/30	M55155/30XD12	A-A-59126/30	AA59126/30XD12
15R-211-3-095	MIL-T-55155/30	M55155/30XC12	A-A-59126/30	AA59126/30XC12

15R-211-4-XX

PART NUMBER	MIL SPECIFICATION	MIL PART NUMBER	COMMERCIAL ITEM DESCRIPTION (CID) SPECIFICATION	CID PART NUMBER
15R-211-4-05	MIL-T-55155/30	M55155/30XB16 (M55155/30-16Z; SE30XC16Z)	A-A-59126/30	AA59166/30XB16
15R-211-4-088	MIL-T-55155/30	M55155/30XD16	A-A-59126/30	AA59166/30XD16
15R-211-4-095	MIL-T-55155/30	M55155/30XC16	A-A-59126/30	AA59166/30XC16

15R-211-6-XX

PART NUMBER	MIL SPECIFICATION	MIL PART NUMBER	COMMERCIAL ITEM DESCRIPTION (CID) SPECIFICATION	CID PART NUMBER
15R-211-6-05	MIL-T-55155/30	M55155/30XB19 (M55155/30-19Z; SE30XC19Z)	A-A-59126/30	AA59196/30XB19
15R-211-6-088	MIL-T-55155/30	M55155/30XD19	A-A-59126/30	AA59196/30XD19
15R-211-6-095	MIL-T-55155/30	M55155/30XC19	A-A-59126/30	AA59196/30XC19

15R-211-8-XX

PART NUMBER	MIL SPECIFICATION	MIL PART NUMBER	COMMERCIAL ITEM DESCRIPTION (CID) SPECIFICATION	CID PART NUMBER
15R-211-8-05	MIL-T-55155/30	M55155/30XB22 (M55155/30-22Z; SE30XC22Z)	A-A-59126/30	AA59226/30XB22
15R-211-8-088	MIL-T-55155/30	M55155/30XD22	A-A-59126/30	AA59226/30XD22
15R-211-8-095	MIL-T-55155/30	M55155/30XC22	A-A-59126/30	AA59226/30XC22

TOOLING:

INSTALLATION TOOL: ARBOR PRESS	INSTALLATION TOOL: ANVIL (ARBOR PRESS OPERATED)	INSTALLATION TOOL: PRESS-FIT / ROLL SWAGE / RIVET PUNCH (ARBOR PRESS OPERATED)	INSTALLATION TOOL: FLARE SWAGE PUNCH (ARBOR PRESS OPERATED)
TM1	TA312-200-62	TP262-201	TFLP90-350

**NOTES:**

---

**DATASHEET NOTES**

N/A

---

**INSTRUCTION NOTES**

SEE GENERAL SWAGING INSTALLATION INSTRUCTION ON CONCORD ELECTRONICS' WEBSITE [WWW.CONCORD-ELECTRONICS.COM](http://WWW.CONCORD-ELECTRONICS.COM)

---