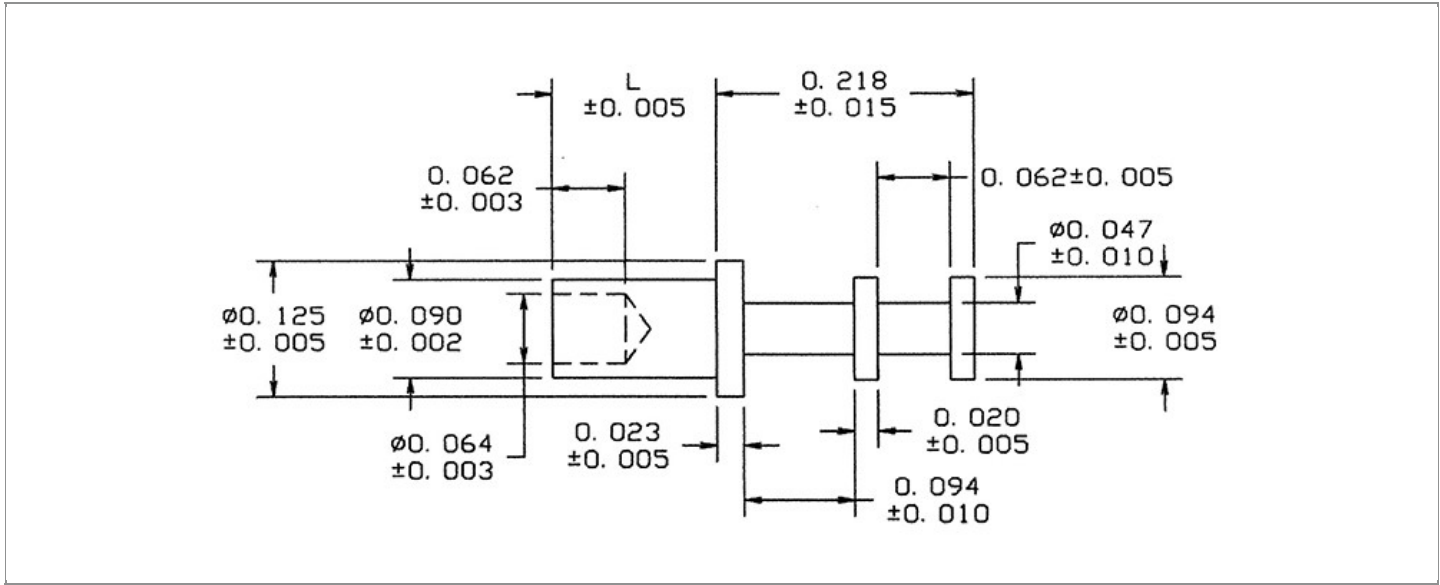


DRAWING NUMBER:	15R-209-X-XX
PRODUCT GROUP:	TERMINALS
SUB-GROUP:	MILITARY NON-INSULATED TERMINALS
DESCRIPTION:	NON-INSULATED DOUBLE TURRET TERMINAL



BOARD / PANEL MOUNTING METHOD	MOUNTING HOLE SIZE	DRILL SIZE	FEED THRU COMBINATION
SWAGE MOUNT	0.094" ± 0.001	3/32"	N/A

PART NO. STRUCTURE:

15R-209 - X - XX
 PART SERIES DIMENSION FINISH

MATERIAL OPTIONS:

15R-209-X-XX

COMPONENT	MATERIAL	MATERIAL AND SPECIFICATION
TERMINAL	PHOSPHOR BRONZE	PHOSPHOR BRONZE PER ASTM B139, ALLOY C54400

DIMENSION OPTIONS:

15R-209-X-XX

DIMENSION	K	OVERALL LENGTH	SHANK LENGTH (L)	BOARD/PANEL THICKNESS
1	N/A	0.296"	0.078"	1/32"
2	N/A	0.327"	0.109"	1/16"
3	N/A	0.358"	0.140"	3/32"
4	N/A	0.389"	0.171"	1/8"
6	N/A	0.452"	0.234"	3/16"
8	N/A	0.514"	0.296"	1/4"

FINISH - PLATING OPTIONS:

15R-209-X-**XX**

FINISH CODE	COMPONENT	FINISH	FINISH AND SPECIFICATION
05	TERMINAL	ELECTRO-SOLDER	0.000300"MIN. ELECTRO-SOLDER PER SAE-AMS-P-81728 OVER 0.000100"MIN. COPPER PER SAE-AMS-2418
088	TERMINAL	BRIGHT TIN-LEAD	0.000300"MIN. BRIGHT TIN-LEAD (Sn93%-Pb7%) PER ASTM B545 OVER 0.000100"MIN. COPPER PER SAE-AMS-2418
095	TERMINAL	HOT SOLDER DIP	0.000100"MIN. HOT SOLDER DIP USING Sn60 PER IPC-J-STD-006 OVER 0.000100"MIN. COPPER PER SAE-AMS-2418

TOLERANCES:*

DECIMAL	FRACTIONAL	ANGULAR	DRAWING ORIGATION DATE	LAST MODIFICATION DATE
N/A	N/A	N/A	10/23/2002	3/1/2017

*All dimensions are in inches.

RoHS COMPLIANCE:

15R-209-1-XX

PART NUMBER	RoHS COMPLIANT
15R-209-1-05	NO
15R-209-1-088	NO
15R-209-1-095	NO

15R-209-2-XX

PART NUMBER	RoHS COMPLIANT
15R-209-2-05	NO
15R-209-2-088	NO
15R-209-2-095	NO

15R-209-3-XX

PART NUMBER	RoHS COMPLIANT
15R-209-3-05	NO
15R-209-3-088	NO
15R-209-3-095	NO

15R-209-4-XX

PART NUMBER	RoHS COMPLIANT
15R-209-4-05	NO
15R-209-4-088	NO
15R-209-4-095	NO

15R-209-6-XX

PART NUMBER	RoHS COMPLIANT
15R-209-6-05	NO
15R-209-6-088	NO
15R-209-6-095	NO

15R-209-8-XX

PART NUMBER	RoHS COMPLIANT
15R-209-8-05	NO
15R-209-8-088	NO
15R-209-8-095	NO

MILITARY REFERENCE SPECIFICATIONS:

15R-209-1-XX

PART NUMBER	MIL SPECIFICATION	MIL PART NUMBER	COMMERCIAL ITEM DESCRIPTION (CID) SPECIFICATION	CID PART NUMBER
15R-209-1-05	MIL-T-55155/30	M55155/30XB03 (M55155/30-3Z; SE30XC03Z)	A-A-59126/30	AA59126/30XB03
15R-209-1-088	MIL-T-55155/30	M55155/30XD03	A-A-59126/30	AA59126/30XD03
15R-209-1-095	MIL-T-55155/30	M55155/30XC03	A-A-59126/30	AA59126/30XC03

Continued on next page...

MILITARY REFERENCE SPECIFICATIONS CONTINUED:

15R-209-2-XX

PART NUMBER	MIL SPECIFICATION	MIL PART NUMBER	COMMERCIAL ITEM DESCRIPTION (CID) SPECIFICATION	CID PART NUMBER
15R-209-2-05	MIL-T-55155/30	M55155/30XB06 (M55155/30-6Z; SE30XC06Z)	A-A-59126/30	AA59126/30XB06
15R-209-2-088	MIL-T-55155/30	M55155/30XD06	A-A-59126/30	AA59126/30XD06
15R-209-2-095	MIL-T-55155/30	M55155/30XC06	A-A-59126/30	AA59126/30XC06

15R-209-3-XX

PART NUMBER	MIL SPECIFICATION	MIL PART NUMBER	COMMERCIAL ITEM DESCRIPTION (CID) SPECIFICATION	CID PART NUMBER
15R-209-3-05	MIL-T-55155/30	M55155/30XB10 (M55155/30-10Z; SE30XC10Z)	A-A-59126/30	AA59126/30XB10
15R-209-3-088	MIL-T-55155/30	M55155/30XD10	A-A-59126/30	AA59126/30XD10
15R-209-3-095	MIL-T-55155/30	M55155/30XC10	A-A-59126/30	AA59126/30XC10

15R-209-4-XX

PART NUMBER	MIL SPECIFICATION	MIL PART NUMBER	COMMERCIAL ITEM DESCRIPTION (CID) SPECIFICATION	CID PART NUMBER
15R-209-4-05	MIL-T-55155/30	M55155/30XB14 (M55155/30-14Z; SE30XC14Z)	A-A-59126/30	AA59126/30XB14
15R-209-4-088	MIL-T-55155/30	M55155/30XD14	A-A-59126/30	AA59126/30XD14
15R-209-4-095	MIL-T-55155/30	M55155/30XC14	A-A-59126/30	AA59126/30XC14

15R-209-6-XX

PART NUMBER	MIL SPECIFICATION	MIL PART NUMBER	COMMERCIAL ITEM DESCRIPTION (CID) SPECIFICATION	CID PART NUMBER
15R-209-6-05	MIL-T-55155/30	M55155/30XB17 (M55155/30-17Z; SE30XC17Z)	A-A-59126/30	AA59126/30XB17
15R-209-6-088	MIL-T-55155/30	M55155/30XD17	A-A-59126/30	AA59126/30XD17
15R-209-6-095	MIL-T-55155/30	M55155/30XC17	A-A-59126/30	AA59126/30XC17

15R-209-8-XX

PART NUMBER	MIL SPECIFICATION	MIL PART NUMBER	COMMERCIAL ITEM DESCRIPTION (CID) SPECIFICATION	CID PART NUMBER
15R-209-8-05	MIL-T-55155/30	M55155/30XB20 (M55155/30-20Z; SE30XC20Z)	A-A-59126/30	AA59126/30XB20
15R-209-8-088	MIL-T-55155/30	M55155/30XD20	A-A-59126/30	AA59126/30XD20
15R-209-8-095	MIL-T-55155/30	M55155/30XC20	A-A-59126/30	AA59126/30XC20

TOOLING:

INSTALLATION TOOL: ARBOR PRESS	INSTALLATION TOOL: ANVIL (ARBOR PRESS OPERATED)	INSTALLATION TOOL: PRESS-FIT / ROLL SWAGE / RIVET PUNCH (ARBOR PRESS OPERATED)	INSTALLATION TOOL: FLARE SWAGE PUNCH (ARBOR PRESS OPERATED)
TM1	TA125-94-23	TP90-64	TFLP90-175

NOTES:

DATASHEET NOTES

N/A

INSTRUCTION NOTES

SEE GENERAL SWAGING INSTALLATION INSTRUCTION ON CONCORD ELECTRONICS' WEBSITE WWW.CONCORD-ELECTRONICS.COM