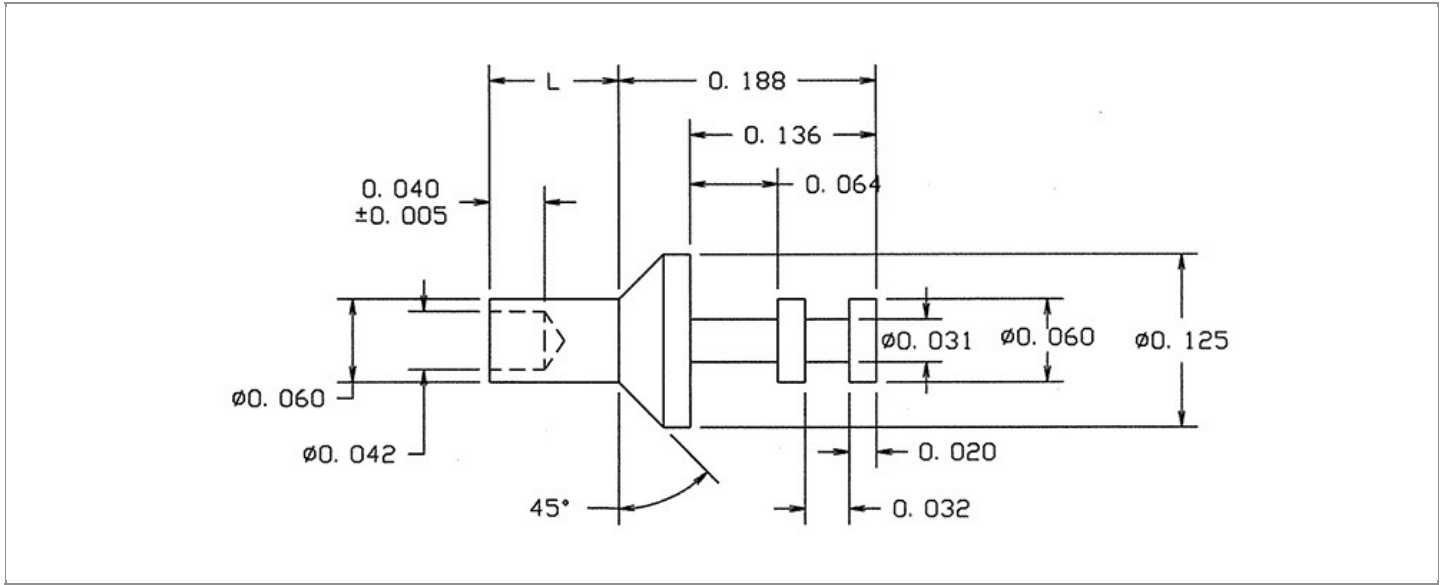


DRAWING NUMBER:	15-905-X-XX
PRODUCT GROUP:	TERMINALS
SUB-GROUP:	MILITARY NON-INSULATED TERMINALS
DESCRIPTION:	NON-INSULATED DOUBLE TURRET TERMINAL



BOARD / PANEL MOUNTING METHOD	MOUNTING HOLE SIZE	DRILL SIZE	FEED THRU COMBINATION
SWAGE MOUNT	0.0635" ± 0.001	#52	N/A

PART NO. STRUCTURE:

15-905 - X - XX
 PART SERIES DIMENSION FINISH

MATERIAL OPTIONS:

15-905-X-XX

COMPONENT	MATERIAL	MATERIAL AND SPECIFICATION
TERMINAL	BRASS	BRASS PER ASTM B16, ALLOY C36000, 1/2 HARD

DIMENSION OPTIONS:

15-905-X-XX

DIMENSION	K	OVERALL LENGTH	SHANK LENGTH (L)	BOARD/PANEL THICKNESS
1	N/A	0.250"	0.062"	1/32"
2	N/A	0.282"	0.094"	1/16"
3	N/A	0.313"	0.125"	3/32"
4	N/A	0.344"	0.156"	1/8"

FINISH - PLATING OPTIONS:

15-905-X-**XX**

FINISH CODE	COMPONENT	FINISH	FINISH AND SPECIFICATION
05	TERMINAL	ELECTRO-SOLDER	0.000300"MIN. ELECTRO-SOLDER PER SAE-AMS-P-81728 OVER 0.000100"MIN. COPPER PER SAE-AMS-2418
088	TERMINAL	BRIGHT TIN-LEAD	0.000300"MIN. BRIGHT TIN-LEAD (Sn93%-Pb7%) PER ASTM B545 OVER 0.000100"MIN. COPPER PER SAE-AMS-2418
095	TERMINAL	HOT SOLDER DIP	0.000100"MIN. HOT SOLDER DIP USING Sn60 PER IPC-J-STD-006 OVER 0.000100"MIN. COPPER PER SAE-AMS-2418

TOLERANCES:*

DECIMAL	FRACTIONAL	ANGULAR	DRAWING ORIGATION DATE	LAST MODIFICATION DATE
± 0.005	± 1/64	± 3 °	8/7/1998	3/1/2017

*All dimensions are in inches.

RoHS COMPLIANCE:

15-905-1-XX

PART NUMBER	RoHS COMPLIANT
15-905-1-05	NO
15-905-1-088	NO
15-905-1-095	NO

15-905-2-XX

PART NUMBER	RoHS COMPLIANT
15-905-2-05	NO
15-905-2-088	NO
15-905-2-095	NO

15-905-3-XX

PART NUMBER	RoHS COMPLIANT
15-905-3-05	NO
15-905-3-088	NO
15-905-3-095	NO

15-905-4-XX

PART NUMBER	RoHS COMPLIANT
15-905-4-05	NO
15-905-4-088	NO
15-905-4-095	NO

MILITARY REFERENCE SPECIFICATIONS:

15-905-1-XX

PART NUMBER	MIL SPECIFICATION	MIL PART NUMBER	COMMERCIAL ITEM DESCRIPTION (CID) SPECIFICATION	CID PART NUMBER
15-905-1-05	MIL-T-55155/23	M55155/23XH01 (M55155/23-1S; SE23XC01S)	A-A-59126/23	AA59126/23XH01
15-905-1-088	MIL-T-55155/23	M55155/23XJ01	A-A-59126/23	AA59126/23XJ01 (AA59126/2301)
15-905-1-095	MIL-T-55155/23	M55155/23XI01	A-A-59126/23	AA59126/23XI01

Continued on next page...

MILITARY REFERENCE SPECIFICATIONS CONTINUED:

15-905-2-XX

PART NUMBER	MIL SPECIFICATION	MIL PART NUMBER	COMMERCIAL ITEM DESCRIPTION (CID) SPECIFICATION	CID PART NUMBER
15-905-2-05	MIL-T-55155/23	M55155/23XH02 (M55155/23-2S; SE23XC02S)	A-A-59126/23	AA59126/23XH02
15-905-2-088	MIL-T-55155/23	M55155/23XJ02	A-A-59126/23	AA59126/23XJ02 (AA59126/2302)
15-905-2-095	MIL-T-55155/23	M55155/23XI02	A-A-59126/23	AA59126/23XI02

15-905-3-XX

PART NUMBER	MIL SPECIFICATION	MIL PART NUMBER	COMMERCIAL ITEM DESCRIPTION (CID) SPECIFICATION	CID PART NUMBER
15-905-3-05	MIL-T-55155/23	M55155/23XH03 (M55155/23-3S; SE23XC03S)	A-A-59126/23	AA59126/23XH03
15-905-3-088	MIL-T-55155/23	M55155/23XJ03	A-A-59126/23	AA59126/23XJ03 (AA59126/2303)
15-905-3-095	MIL-T-55155/23	M55155/23XI03	A-A-59126/23	AA59126/23XI03

15-905-4-XX

PART NUMBER	MIL SPECIFICATION	MIL PART NUMBER	COMMERCIAL ITEM DESCRIPTION (CID) SPECIFICATION	CID PART NUMBER
15-905-4-05	MIL-T-55155/23	M55155/23XH04 (M55155/23-4S; SE23XC04S)	A-A-59126/23	AA59126/23XH04
15-905-4-088	MIL-T-55155/23	M55155/23XJ04	A-A-59126/23	AA59126/23XJ04 (AA59126/2304)
15-905-4-095	MIL-T-55155/23	M55155/23XI04	A-A-59126/23	AA59126/23XI04

TOOLING:

INSTALLATION TOOL: ARBOR PRESS	INSTALLATION TOOL: ANVIL (ARBOR PRESS OPERATED)	INSTALLATION TOOL: PRESS-FIT / ROLL SWAGE / RIVET PUNCH (ARBOR PRESS OPERATED)	INSTALLATION TOOL: FLARE SWAGE PUNCH (ARBOR PRESS OPERATED)
TM1	TA125-63-20	TP62-44	TFLP90-150

NOTES:

DATASHEET NOTES
N/A
INSTRUCTION NOTES
SEE GENERAL SWAGING INSTALLATION INSTRUCTION ON CONCORD ELECTRONICS' WEBSITE WWW.CONCORD-ELECTRONICS.COM