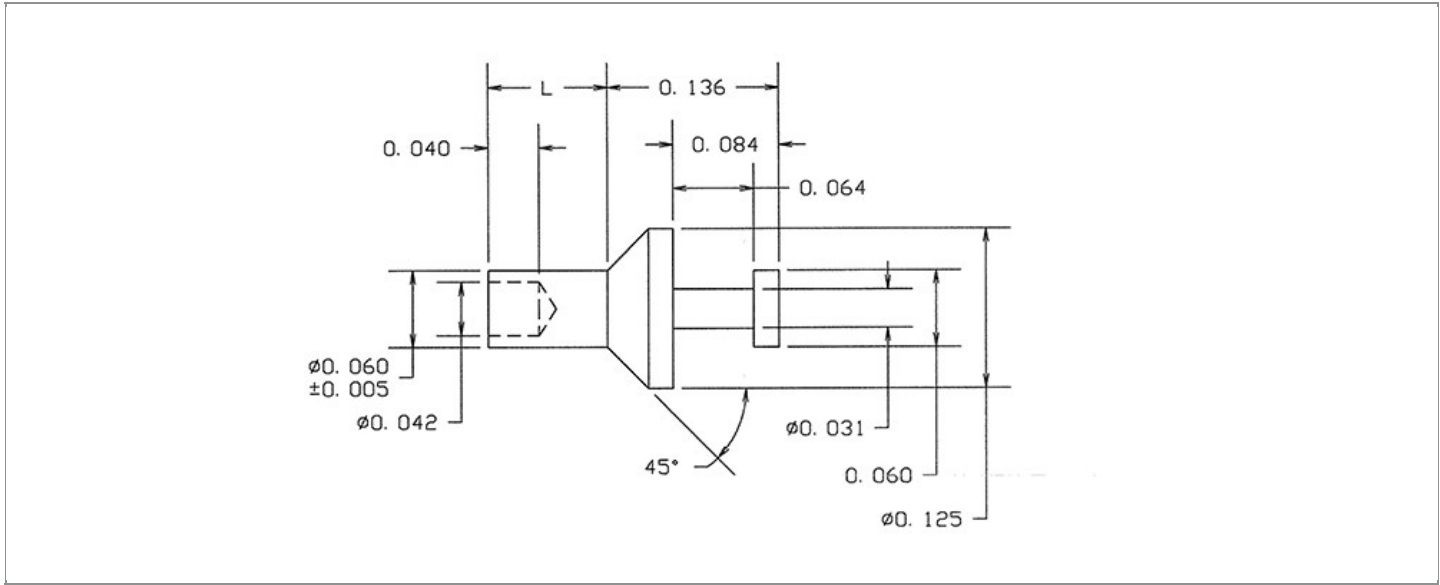


<b>DRAWING NUMBER:</b>	<b>15-904-X-XX</b>
<b>PRODUCT GROUP:</b>	TERMINALS
<b>SUB-GROUP:</b>	MILITARY NON-INSULATED TERMINALS
<b>DESCRIPTION:</b>	NON-INSULATED TURRET TERMINAL



BOARD / PANEL MOUNTING METHOD	MOUNTING HOLE SIZE	DRILL SIZE	FEED THRU COMBINATION
SWAGE MOUNT	0.0635" ± 0.001	#52	N/A

**PART NO. STRUCTURE:**

15-904	-	X	-	XX
PART SERIES		DIMENSION		FINISH

**MATERIAL OPTIONS:**

15-904-X-XX

COMPONENT	MATERIAL	MATERIAL AND SPECIFICATION
TERMINAL	BRASS	BRASS PER ASTM B16, ALLOY C36000, 1/2 HARD

**DIMENSION OPTIONS:**

15-904-X-XX

DIMENSION	K	OVERALL LENGTH	SHANK LENGTH (L)	BOARD/PANEL THICKNESS
1	N/A	0.198"	0.062"	1/32"
2	N/A	0.230"	0.094"	1/16"
3	N/A	0.261"	0.125"	3/32"
4	N/A	0.292"	0.156"	1/8"

FINISH - PLATING OPTIONS:

15-904-X-**XX**

FINISH CODE	COMPONENT	FINISH	FINISH AND SPECIFICATION
05	TERMINAL	ELECTRO-SOLDER	0.000300"MIN. ELECTRO-SOLDER PER SAE-AMS-P-81728 OVER 0.000100"MIN. COPPER PER SAE-AMS-2418
088	TERMINAL	BRIGHT TIN-LEAD	0.000300"MIN. BRIGHT TIN-LEAD (Sn93%-Pb7%) PER ASTM B545 OVER 0.000100"MIN. COPPER PER SAE-AMS-2418
095	TERMINAL	HOT SOLDER DIP	0.000100"MIN. HOT SOLDER DIP USING Sn60 PER IPC-J-STD-006 OVER 0.000100"MIN. COPPER PER SAE-AMS-2418

TOLERANCES:\*

DECIMAL	FRACTIONAL	ANGULAR	DRAWING ORIENTATION DATE	LAST MODIFICATION DATE
± 0.005	N/A	± 3 °	11/4/2002	3/1/2017

\*All dimensions are in inches.

RoHS COMPLIANCE:

15-904-1-XX

PART NUMBER	RoHS COMPLIANT
15-904-1-05	NO
15-904-1-088	NO
15-904-1-095	NO

15-904-2-XX

PART NUMBER	RoHS COMPLIANT
15-904-2-05	NO
15-904-2-088	NO
15-904-2-095	NO

15-904-3-XX

PART NUMBER	RoHS COMPLIANT
15-904-3-05	NO
15-904-3-088	NO
15-904-3-095	NO

15-904-4-XX

PART NUMBER	RoHS COMPLIANT
15-904-4-05	NO
15-904-4-088	NO
15-904-4-095	NO

MILITARY REFERENCE SPECIFICATIONS:

15-904-1-XX

PART NUMBER	MIL SPECIFICATION	MIL PART NUMBER	COMMERCIAL ITEM DESCRIPTION (CID) SPECIFICATION	CID PART NUMBER
15-904-1-05	MIL-T-55155/25	M55155/25XH01 (M55155/25-1S; SE25XC01S)	A-A-59126/25	AA59126/25XH01
15-904-1-088	MIL-T-55155/25	M55155/25XJ01	A-A-59126/25	AA59126/25XJ01 (AA59126/2501)
15-904-1-095	MIL-T-55155/25	M55155/25XI01	A-A-59126/25	AA59126/25XI01

Continued on next page...

MILITARY REFERENCE SPECIFICATIONS CONTINUED:

15-904-2-XX

PART NUMBER	MIL SPECIFICATION	MIL PART NUMBER	COMMERCIAL ITEM DESCRIPTION (CID) SPECIFICATION	CID PART NUMBER
15-904-2-05	MIL-T-55155/25	M55155/25XH02 (M55155/25-2S; SE25XC02S)	A-A-59126/25	AA59126/25XH02
15-904-2-088	MIL-T-55155/25	M55155/25XJ02	A-A-59126/25	AA59126/25XJ02 (AA59126/2502)
15-904-2-095	MIL-T-55155/25	M55155/25XI02	A-A-59126/25	AA59126/25XI02

15-904-3-XX

PART NUMBER	MIL SPECIFICATION	MIL PART NUMBER	COMMERCIAL ITEM DESCRIPTION (CID) SPECIFICATION	CID PART NUMBER
15-904-3-05	MIL-T-55155/25	M55155/25XH03 (M55155/25-3S; SE25XC03S)	A-A-59126/25	AA59126/25XH03
15-904-3-088	MIL-T-55155/25	M55155/25XJ03	A-A-59126/25	AA59126/25XJ03 (AA59126/2503)
15-904-3-095	MIL-T-55155/25	M55155/25XI03	A-A-59126/25	AA59126/25XI03

15-904-4-XX

PART NUMBER	MIL SPECIFICATION	MIL PART NUMBER	COMMERCIAL ITEM DESCRIPTION (CID) SPECIFICATION	CID PART NUMBER
15-904-4-05	MIL-T-55155/25	M55155/25XH04 (M55155/25-4S; SE25XC04S)	A-A-59126/25	AA59126/25XH04
15-904-4-088	MIL-T-55155/25	M55155/25XJ04	A-A-59126/25	AA59126/25XJ04 (AA59126/2504)
15-904-4-095	MIL-T-55155/25	M55155/25XI04	A-A-59126/25	AA59126/25XI04

TOOLING:

INSTALLATION TOOL: ARBOR PRESS	INSTALLATION TOOL: ANVIL (ARBOR PRESS OPERATED)	INSTALLATION TOOL: PRESS-FIT / ROLL SWAGE / RIVET PUNCH (ARBOR PRESS OPERATED)	INSTALLATION TOOL: FLARE SWAGE PUNCH (ARBOR PRESS OPERATED)
TM1	TA125-63-20	TP62-44	TFLP90-150

NOTES:

<b>DATASHEET NOTES</b>
N/A
<b>INSTRUCTION NOTES</b>
SEE GENERAL SWAGING INSTALLATION INSTRUCTION ON CONCORD ELECTRONICS' WEBSITE <a href="http://WWW.CONCORD-ELECTRONICS.COM">WWW.CONCORD-ELECTRONICS.COM</a>