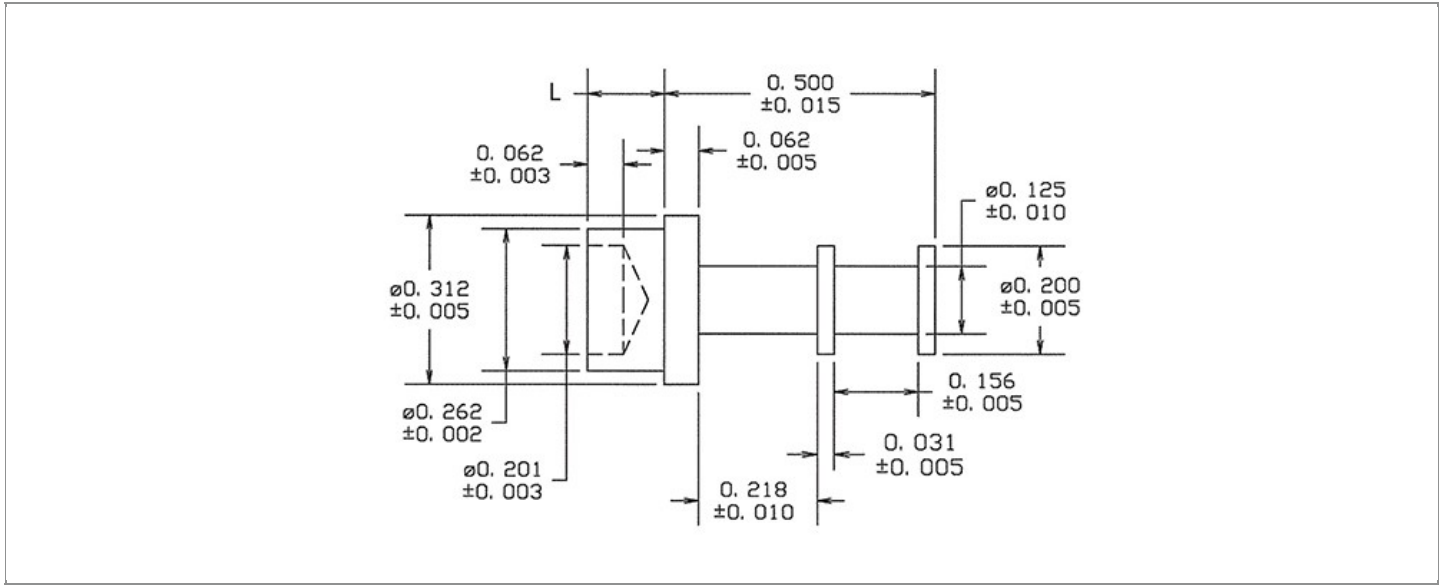


DRAWING NUMBER:	15-211-X-XX
PRODUCT GROUP:	TERMINALS
SUB-GROUP:	MILITARY NON-INSULATED TERMINALS
DESCRIPTION:	NON-INSULATED DOUBLE TURRET TERMINAL



BOARD / PANEL MOUNTING METHOD	MOUNTING HOLE SIZE	DRILL SIZE	FEED THRU COMBINATION
SWAGE MOUNT	0.266" ± 0.001	H	N/A

PART NO. STRUCTURE:

15-211 - X - XX
 PART SERIES DIMENSION FINISH

MATERIAL OPTIONS:

15-211-X-XX

COMPONENT	MATERIAL	MATERIAL AND SPECIFICATION
TERMINAL	BRASS	BRASS PER ASTM B16, ALLOY C36000, 1/2 HARD

DIMENSION OPTIONS:

15-211-X-XX

DIMENSION	K	OVERALL LENGTH	SHANK LENGTH (L)	BOARD/PANEL THICKNESS
2	N/A	0.609"	0.109"	1/16"
3	N/A	0.640"	0.140"	3/32"
4	N/A	0.671"	0.171"	1/8"
6	N/A	0.734"	0.234"	3/16"
8	N/A	0.796"	0.296"	1/4"

FINISH - PLATING OPTIONS:

15-211-X-**XX**

FINISH CODE	COMPONENT	FINISH	FINISH AND SPECIFICATION
05	TERMINAL	ELECTRO-SOLDER	0.000300"MIN. ELECTRO-SOLDER PER SAE-AMS-P-81728 OVER 0.000100"MIN. COPPER PER SAE-AMS-2418
088	TERMINAL	BRIGHT TIN-LEAD	0.000300"MIN. BRIGHT TIN-LEAD (Sn93%-Pb7%) PER ASTM B545 OVER 0.000100"MIN. COPPER PER SAE-AMS-2418
095	TERMINAL	HOT SOLDER DIP	0.000100"MIN. HOT SOLDER DIP USING Sn60 PER IPC-J-STD-006 OVER 0.000100"MIN. COPPER PER SAE-AMS-2418

TOLERANCES:*

DECIMAL	FRACTIONAL	ANGULAR	DRAWING ORIGATION DATE	LAST MODIFICATION DATE
N/A	N/A	± 3 °	2/4/2002	3/1/2017

*All dimensions are in inches.

RoHS COMPLIANCE:

15-211-2-XX

PART NUMBER	RoHS COMPLIANT
15-211-2-05	NO
15-211-2-088	NO
15-211-2-095	NO

15-211-3-XX

PART NUMBER	RoHS COMPLIANT
15-211-3-05	NO
15-211-3-088	NO
15-211-3-095	NO

15-211-4-XX

PART NUMBER	RoHS COMPLIANT
15-211-4-05	NO
15-211-4-088	NO
15-211-4-095	NO

15-211-6-XX

PART NUMBER	RoHS COMPLIANT
15-211-6-05	NO
15-211-6-088	NO
15-211-6-095	NO

15-211-8-XX

PART NUMBER	RoHS COMPLIANT
15-211-8-05	NO
15-211-8-088	NO
15-211-8-095	NO

MILITARY REFERENCE SPECIFICATIONS:

15-211-2-XX

PART NUMBER	MIL SPECIFICATION	MIL PART NUMBER	COMMERCIAL ITEM DESCRIPTION (CID) SPECIFICATION	CID PART NUMBER
15-211-2-05	MIL-T-55155/30	M55155/30XH08 (M55155/30-8S; SE30XC08S)	A-A-59126/30	AA59126/30XH08
15-211-2-088	MIL-T-55155/30	M55155/30XJ08	A-A-59126/30	AA59126/30XJ08 (AA59126/3008)
15-211-2-095	MIL-T-55155/30	M55155/30XI08	A-A-59126/30	AA59126/30XI08

Continued on next page...

MILITARY REFERENCE SPECIFICATIONS CONTINUED:

15-211-3-XX

PART NUMBER	MIL SPECIFICATION	MIL PART NUMBER	COMMERCIAL ITEM DESCRIPTION (CID) SPECIFICATION	CID PART NUMBER
15-211-3-05	MIL-T-55155/30	M55155/30XH12 (M55155/30-12S; SE30XC12S)	A-A-59126/30	AA59126/30XH12
15-211-3-088	MIL-T-55155/30	M55155/30XJ12	A-A-59126/30	AA59126/30XJ12 (AA59126/3012)
15-211-3-095	MIL-T-55155/30	M55155/30XI12	A-A-59126/30	AA59126/30XI12

15-211-4-XX

PART NUMBER	MIL SPECIFICATION	MIL PART NUMBER	COMMERCIAL ITEM DESCRIPTION (CID) SPECIFICATION	CID PART NUMBER
15-211-4-05	MIL-T-55155/30	M55155/30XH16 (M55155/30-16S; SE30XC16S)	A-A-59126/30	AA59166/30XH16
15-211-4-088	MIL-T-55155/30	M55155/30XJ16	A-A-59126/30	AA59166/30XJ16 (AA59166/3016)
15-211-4-095	MIL-T-55155/30	M55155/30XI16	A-A-59126/30	AA59166/30XI16

15-211-6-XX

PART NUMBER	MIL SPECIFICATION	MIL PART NUMBER	COMMERCIAL ITEM DESCRIPTION (CID) SPECIFICATION	CID PART NUMBER
15-211-6-05	MIL-T-55155/30	M55155/30XH19 (M55155/30-19S; SE30XC19S)	A-A-59126/30	AA59196/30XH19
15-211-6-088	MIL-T-55155/30	M55155/30XJ19	A-A-59126/30	AA59196/30XJ19 (AA59196/3019)
15-211-6-095	MIL-T-55155/30	M55155/30XI19	A-A-59126/30	AA59196/30XI19

15-211-8-XX

PART NUMBER	MIL SPECIFICATION	MIL PART NUMBER	COMMERCIAL ITEM DESCRIPTION (CID) SPECIFICATION	CID PART NUMBER
15-211-8-05	MIL-T-55155/30	M55155/30XH22 (M55155/30-22S; SE30XC22S)	A-A-59126/30	AA59226/30XH22
15-211-8-088	MIL-T-55155/30	M55155/30XJ22	A-A-59126/30	AA59226/30XJ22 (AA59226/3022)
15-211-8-095	MIL-T-55155/30	M55155/30XI22	A-A-59126/30	AA59226/30XI22

TOOLING:

INSTALLATION TOOL: ARBOR PRESS	INSTALLATION TOOL: ANVIL (ARBOR PRESS OPERATED)	INSTALLATION TOOL: PRESS-FIT / ROLL SWAGE / RIVET PUNCH (ARBOR PRESS OPERATED)	INSTALLATION TOOL: FLARE SWAGE PUNCH (ARBOR PRESS OPERATED)
TM1	TA312-200-62	TP262-201	TFLP90-350

NOTES:

DATASHEET NOTES

N/A

INSTRUCTION NOTES

SEE GENERAL SWAGING INSTALLATION INSTRUCTION ON CONCORD ELECTRONICS' WEBSITE WWW.CONCORD-ELECTRONICS.COM
