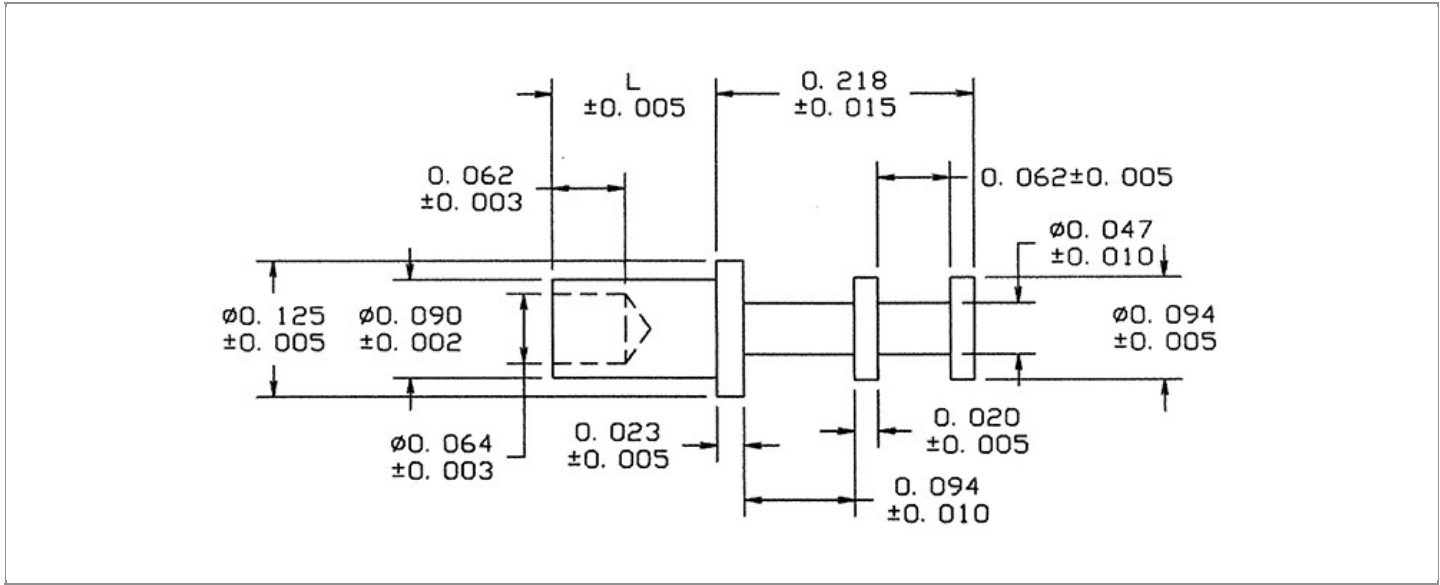


DRAWING NUMBER:	15-209-X-XX
PRODUCT GROUP:	TERMINALS
SUB-GROUP:	MILITARY NON-INSULATED TERMINALS
DESCRIPTION:	NON-INSULATED DOUBLE TURRET TERMINAL



BOARD / PANEL MOUNTING METHOD	MOUNTING HOLE SIZE	DRILL SIZE	FEED THRU COMBINATION
SWAGE MOUNT	0.094" ± 0.001	3/32"	N/A

PART NO. STRUCTURE:

15-209 - X - XX
 PART SERIES DIMENSION FINISH

MATERIAL OPTIONS:

15-209-X-XX

COMPONENT	MATERIAL	MATERIAL AND SPECIFICATION
TERMINAL	BRASS	BRASS PER ASTM B16, ALLOY C36000, 1/2 HARD

DIMENSION OPTIONS:

15-209-X-XX

DIMENSION	K	OVERALL LENGTH	SHANK LENGTH (L)	BOARD/PANEL THICKNESS
1	N/A	0.296"	0.078"	1/32"
2	N/A	0.327"	0.109"	1/16"
3	N/A	0.358"	0.140"	3/32"
4	N/A	0.389"	0.171"	1/8"
6	N/A	0.452"	0.234"	3/16"
8	N/A	0.514"	0.296"	1/4"

FINISH - PLATING OPTIONS:

15-209-X-XX

FINISH CODE	COMPONENT	FINISH	FINISH AND SPECIFICATION
05	TERMINAL	ELECTRO-SOLDER	0.000300"MIN. ELECTRO-SOLDER PER SAE-AMS-P-81728 OVER 0.000100"MIN. COPPER PER SAE-AMS-2418
088	TERMINAL	BRIGHT TIN-LEAD	0.000300"MIN. BRIGHT TIN-LEAD (Sn93%-Pb7%) PER ASTM B545 OVER 0.000100"MIN. COPPER PER SAE-AMS-2418
095	TERMINAL	HOT SOLDER DIP	0.000100"MIN. HOT SOLDER DIP USING Sn60 PER IPC-J-STD-006 OVER 0.000100"MIN. COPPER PER SAE-AMS-2418

TOLERANCES:*

DECIMAL	FRACTIONAL	ANGULAR	DRAWING ORIGATION DATE	LAST MODIFICATION DATE
N/A	N/A	N/A	10/23/2002	3/1/2017

*All dimensions are in inches.

RoHS COMPLIANCE:

15-209-1-XX

PART NUMBER	RoHS COMPLIANT
15-209-1-05	NO
15-209-1-088	NO
15-209-1-095	NO

15-209-2-XX

PART NUMBER	RoHS COMPLIANT
15-209-2-05	NO
15-209-2-088	NO
15-209-2-095	NO

15-209-3-XX

PART NUMBER	RoHS COMPLIANT
15-209-3-05	NO
15-209-3-088	NO
15-209-3-095	NO

15-209-4-XX

PART NUMBER	RoHS COMPLIANT
15-209-4-05	NO
15-209-4-088	NO
15-209-4-095	NO

15-209-6-XX

PART NUMBER	RoHS COMPLIANT
15-209-6-05	NO
15-209-6-088	NO
15-209-6-095	NO

15-209-8-XX

PART NUMBER	RoHS COMPLIANT
15-209-8-05	NO
15-209-8-088	NO
15-209-8-095	NO

MILITARY REFERENCE SPECIFICATIONS:

15-209-1-XX

PART NUMBER	MIL SPECIFICATION	MIL PART NUMBER	COMMERCIAL ITEM DESCRIPTION (CID) SPECIFICATION	CID PART NUMBER
15-209-1-05	MIL-T-55155/30	M55155/30XH03 (M55155/30-3S; SE30XC03S)	A-A-59126/30	AA59126/30XH03
15-209-1-088	MIL-T-55155/30	M55155/30XJ03	A-A-59126/30	AA59126/30XJ03 (AA59126/3003)
15-209-1-095	MIL-T-55155/30	M55155/30XI03	A-A-59126/30	AA59126/30XI03

Continued on next page...

MILITARY REFERENCE SPECIFICATIONS CONTINUED:

15-209-2-XX

PART NUMBER	MIL SPECIFICATION	MIL PART NUMBER	COMMERCIAL ITEM DESCRIPTION (CID) SPECIFICATION	CID PART NUMBER
15-209-2-05	MIL-T-55155/30	M55155/30XH06 (M55155/30-6S; SE30XC06S)	A-A-59126/30	AA59126/30XH06
15-209-2-088	MIL-T-55155/30	M55155/30XJ06	A-A-59126/30	AA59126/30XJ06 (AA59126/3006)
15-209-2-095	MIL-T-55155/30	M55155/30XI06	A-A-59126/30	AA59126/30XI06

15-209-3-XX

PART NUMBER	MIL SPECIFICATION	MIL PART NUMBER	COMMERCIAL ITEM DESCRIPTION (CID) SPECIFICATION	CID PART NUMBER
15-209-3-05	MIL-T-55155/30	M55155/30XH10 (M55155/30-10S; SE30XC10S)	A-A-59126/30	AA59126/30XH10
15-209-3-088	MIL-T-55155/30	M55155/30XJ10	A-A-59126/30	AA59126/30XJ10 (AA59126/3010)
15-209-3-095	MIL-T-55155/30	M55155/30XI10	A-A-59126/30	AA59126/30XI10

15-209-4-XX

PART NUMBER	MIL SPECIFICATION	MIL PART NUMBER	COMMERCIAL ITEM DESCRIPTION (CID) SPECIFICATION	CID PART NUMBER
15-209-4-05	MIL-T-55155/30	M55155/30XH14 (M55155/30-14S; SE30XC14S)	A-A-59126/30	AA59126/30XH14
15-209-4-088	MIL-T-55155/30	M55155/30XJ14	A-A-59126/30	AA59126/30XJ14 (AA59126/3014)
15-209-4-095	MIL-T-55155/30	M55155/30XI14	A-A-59126/30	AA59126/30XI14

15-209-6-XX

PART NUMBER	MIL SPECIFICATION	MIL PART NUMBER	COMMERCIAL ITEM DESCRIPTION (CID) SPECIFICATION	CID PART NUMBER
15-209-6-05	MIL-T-55155/30	M55155/30XH17 (M55155/30-17S; SE30XC17S)	A-A-59126/30	AA59126/30XH17
15-209-6-088	MIL-T-55155/30	M55155/30XJ17	A-A-59126/30	AA59126/30XJ17 (AA59126/3017)
15-209-6-095	MIL-T-55155/30	M55155/30XI17	A-A-59126/30	AA59126/30XI17

15-209-8-XX

PART NUMBER	MIL SPECIFICATION	MIL PART NUMBER	COMMERCIAL ITEM DESCRIPTION (CID) SPECIFICATION	CID PART NUMBER
15-209-8-05	MIL-T-55155/30	M55155/30XH20 (M55155/30-20S; SE30XC20S)	A-A-59126/30	AA59126/30XH20
15-209-8-088	MIL-T-55155/30	M55155/30XJ20	A-A-59126/30	AA59126/30XJ20 (AA59126/3020)
15-209-8-095	MIL-T-55155/30	M55155/30XI20	A-A-59126/30	AA59126/30XI20

TOOLING:

INSTALLATION TOOL: ARBOR PRESS	INSTALLATION TOOL: ANVIL (ARBOR PRESS OPERATED)	INSTALLATION TOOL: PRESS-FIT / ROLL SWAGE / RIVET PUNCH (ARBOR PRESS OPERATED)	INSTALLATION TOOL: FLARE SWAGE PUNCH (ARBOR PRESS OPERATED)
TM1	TA125-94-23	TP90-64	TFLP90-175

NOTES:

DATASHEET NOTES

N/A

INSTRUCTION NOTES

SEE GENERAL SWAGING INSTALLATION INSTRUCTION ON CONCORD ELECTRONICS' WEBSITE WWW.CONCORD-ELECTRONICS.COM