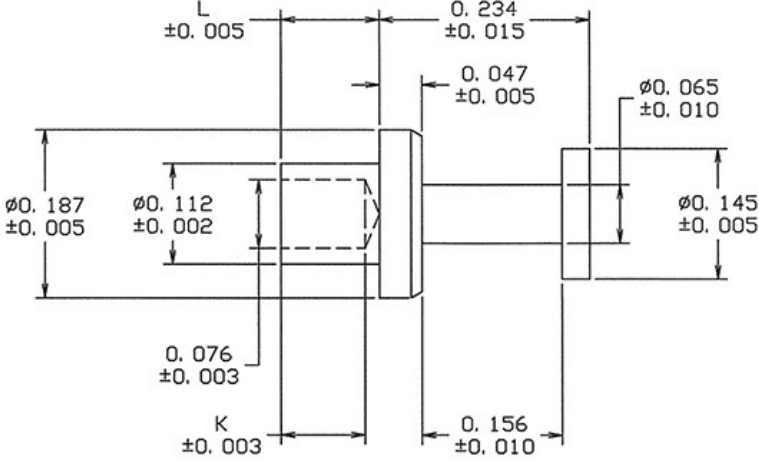


DRAWING NUMBER:	15-103-X-XX
PRODUCT GROUP:	TERMINALS
SUB-GROUP:	MILITARY NON-INSULATED TERMINALS
DESCRIPTION:	NON-INSULATED TURRET TERMINAL



BOARD / PANEL MOUNTING METHOD	MOUNTING HOLE SIZE	DRILL SIZE	FEED THRU COMBINATION
SWAGE MOUNT	0.116" ± 0.001	#32	N/A

PART NO. STRUCTURE:

15-103 - X - XX
 PART SERIES DIMENSION FINISH

MATERIAL OPTIONS:

15-103-X-XX

COMPONENT	MATERIAL	MATERIAL AND SPECIFICATION
TERMINAL	BRASS	BRASS PER ASTM B16, ALLOY C36000, 1/2 HARD

DIMENSION OPTIONS:

15-103-X-XX

DIMENSION	K	OVERALL LENGTH	SHANK LENGTH (L)	BOARD/PANEL THICKNESS
1	0.093"	0.312"	0.078"	1/32"
2	0.093"	0.343"	0.109"	1/16"
3	0.093"	0.374"	0.140"	3/32"
4	0.093"	0.404"	0.170"	1/8"
5	0.031"	0.429"	0.195"	5/32"
6	0.093"	0.464"	0.230"	3/16"

Continued on next page...

DIMENSION OPTIONS CONTINUED:

15-103-X-XX

DIMENSION	K	OVERALL LENGTH	SHANK LENGTH (L)	BOARD/PANEL THICKNESS
8	0.093"	0.531"	0.297"	1/4"

FINISH - PLATING OPTIONS:

15-103-X-XX

FINISH CODE	COMPONENT	FINISH	FINISH AND SPECIFICATION
05	TERMINAL	ELECTRO-SOLDER	0.000300"MIN. ELECTRO-SOLDER PER SAE-AMS-P-81728 OVER 0.000100"MIN. COPPER PER SAE-AMS-2418
088	TERMINAL	BRIGHT TIN-LEAD	0.000300"MIN. BRIGHT TIN-LEAD (Sn93%-Pb7%) PER ASTM B545 OVER 0.000100"MIN. COPPER PER SAE-AMS-2418
095	TERMINAL	HOT SOLDER DIP	0.000100"MIN. HOT SOLDER DIP USING Sn60 PER IPC-J-STD-006 OVER 0.000100"MIN. COPPER PER SAE-AMS-2418

TOLERANCES:*

DECIMAL	FRACTIONAL	ANGULAR	DRAWING ORIGATION DATE	LAST MODIFICATION DATE
N/A	N/A	N/A	11/1/2002	3/1/2017

*All dimensions are in inches.

RoHS COMPLIANCE:

15-103-1-XX

PART NUMBER	RoHS COMPLIANT
15-103-1-05	NO
15-103-1-088	NO
15-103-1-095	NO

15-103-2-XX

PART NUMBER	RoHS COMPLIANT
15-103-2-05	NO
15-103-2-088	NO
15-103-2-095	NO

15-103-3-XX

PART NUMBER	RoHS COMPLIANT
15-103-3-05	NO
15-103-3-088	NO
15-103-3-095	NO

15-103-4-XX

PART NUMBER	RoHS COMPLIANT
15-103-4-05	NO
15-103-4-088	NO
15-103-4-095	NO

15-103-5-XX

PART NUMBER	RoHS COMPLIANT
15-103-5-05	NO
15-103-5-088	NO
15-103-5-095	NO

15-103-6-XX

PART NUMBER	RoHS COMPLIANT
15-103-6-05	NO
15-103-6-088	NO
15-103-6-095	NO

15-103-8-XX

PART NUMBER	RoHS COMPLIANT
15-103-8-05	NO
15-103-8-088	NO
15-103-8-095	NO

MILITARY REFERENCE SPECIFICATIONS:

15-103-1-XX

PART NUMBER	MIL SPECIFICATION	MIL PART NUMBER	COMMERCIAL ITEM DESCRIPTION (CID) SPECIFICATION	CID PART NUMBER
15-103-1-05	MIL-T-55155/29	M55155/29XH04 (M55155/29-4S; SE29XC04S)	A-A-59126/29	AA59126/29XH04
15-103-1-088	MIL-T-55155/29	M55155/29XJ04	A-A-59126/29	AA59126/29XJ04 (AA59126/2904)
15-103-1-095	MIL-T-55155/29	M55155/29XI04	A-A-59126/29	AA59126/29XI04

15-103-2-XX

PART NUMBER	MIL SPECIFICATION	MIL PART NUMBER	COMMERCIAL ITEM DESCRIPTION (CID) SPECIFICATION	CID PART NUMBER
15-103-2-05	MIL-T-55155/29	M55155/29XH07 (M55155/29-7S; SE29XC07S)	A-A-59126/29	AA59126/29XH07
15-103-2-088	MIL-T-55155/29	M55155/29XJ07	A-A-59126/29	AA59126/29XJ07 (AA59126/2907)
15-103-2-095	MIL-T-55155/29	M55155/29XI07	A-A-59126/29	AA59126/29XI07

15-103-3-XX

PART NUMBER	MIL SPECIFICATION	MIL PART NUMBER	COMMERCIAL ITEM DESCRIPTION (CID) SPECIFICATION	CID PART NUMBER
15-103-3-05	MIL-T-55155/29	M55155/29XH10 (M55155/29-10S; SE29XC10S)	A-A-59126/29	AA59126/29XH10
15-103-3-088	MIL-T-55155/29	M55155/29XJ10	A-A-59126/29	AA59126/29XJ10 (AA59126/2910)
15-103-3-095	MIL-T-55155/29	M55155/29XI10	A-A-59126/29	AA59126/29XI10

15-103-4-XX

PART NUMBER	MIL SPECIFICATION	MIL PART NUMBER	COMMERCIAL ITEM DESCRIPTION (CID) SPECIFICATION	CID PART NUMBER
15-103-4-05	MIL-T-55155/29	M55155/29XH13 (M55155/29-13S; SE29XC13S)	A-A-59126/29	AA59126/29XH13
15-103-4-088	MIL-T-55155/29	M55155/29XJ13	A-A-59126/29	AA59126/29XJ13 (AA59126/2913)
15-103-4-095	MIL-T-55155/29	M55155/29XI13	A-A-59126/29	AA59126/29XI13

15-103-5-XX

PART NUMBER	MIL SPECIFICATION	MIL PART NUMBER	COMMERCIAL ITEM DESCRIPTION (CID) SPECIFICATION	CID PART NUMBER
15-103-5-05	MIL-T-55155/29	M55155/29XH14 (M55155/29-14S; SE29XC14S)	A-A-59126/29	AA59126/29XH14
15-103-5-088	MIL-T-55155/29	M55155/29XJ14	A-A-59126/29	AA59126/29XJ14 (AA59126/2914)
15-103-5-095	MIL-T-55155/29	M55155/29XI14	A-A-59126/29	AA59126/29XI14

Continued on next page...

MILITARY REFERENCE SPECIFICATIONS CONTINUED:

15-103-6-XX

PART NUMBER	MIL SPECIFICATION	MIL PART NUMBER	COMMERCIAL ITEM DESCRIPTION (CID) SPECIFICATION	CID PART NUMBER
15-103-6-05	MIL-T-55155/29	M55155/29XH15 (M55155/29-15S; SE29XC15S)	A-A-59126/29	AA59126/29XH15
15-103-6-088	MIL-T-55155/29	M55155/29XJ15	A-A-59126/29	AA59126/29XJ15 (AA59126/2915)
15-103-6-095	MIL-T-55155/29	M55155/29XI15	A-A-59126/29	AA59126/29XI15

15-103-8-XX

PART NUMBER	MIL SPECIFICATION	MIL PART NUMBER	COMMERCIAL ITEM DESCRIPTION (CID) SPECIFICATION	CID PART NUMBER
15-103-8-05	MIL-T-55155/29	M55155/29XH16 (M55155/29-16S; SE29XC16S)	A-A-59126/29	AA59126/29XH16
15-103-8-088	MIL-T-55155/29	M55155/29XJ16	A-A-59126/29	AA59126/29XJ16 (AA59126/2916)
15-103-8-095	MIL-T-55155/29	M55155/29XI16	A-A-59126/29	AA59126/29XI16

TOOLING:

INSTALLATION TOOL: ARBOR PRESS	INSTALLATION TOOL: ANVIL (ARBOR PRESS OPERATED)	INSTALLATION TOOL: PRESS-FIT / ROLL SWAGE / RIVET PUNCH (ARBOR PRESS OPERATED)	INSTALLATION TOOL: FLARE SWAGE PUNCH (ARBOR PRESS OPERATED)
TM1	TA188-146-31	TP112-78	TFLP90-200

NOTES:

DATASHEET NOTES
N/A
INSTRUCTION NOTES
SEE GENERAL SWAGING INSTALLATION INSTRUCTION ON CONCORD ELECTRONICS' WEBSITE WWW.CONCORD-ELECTRONICS.COM