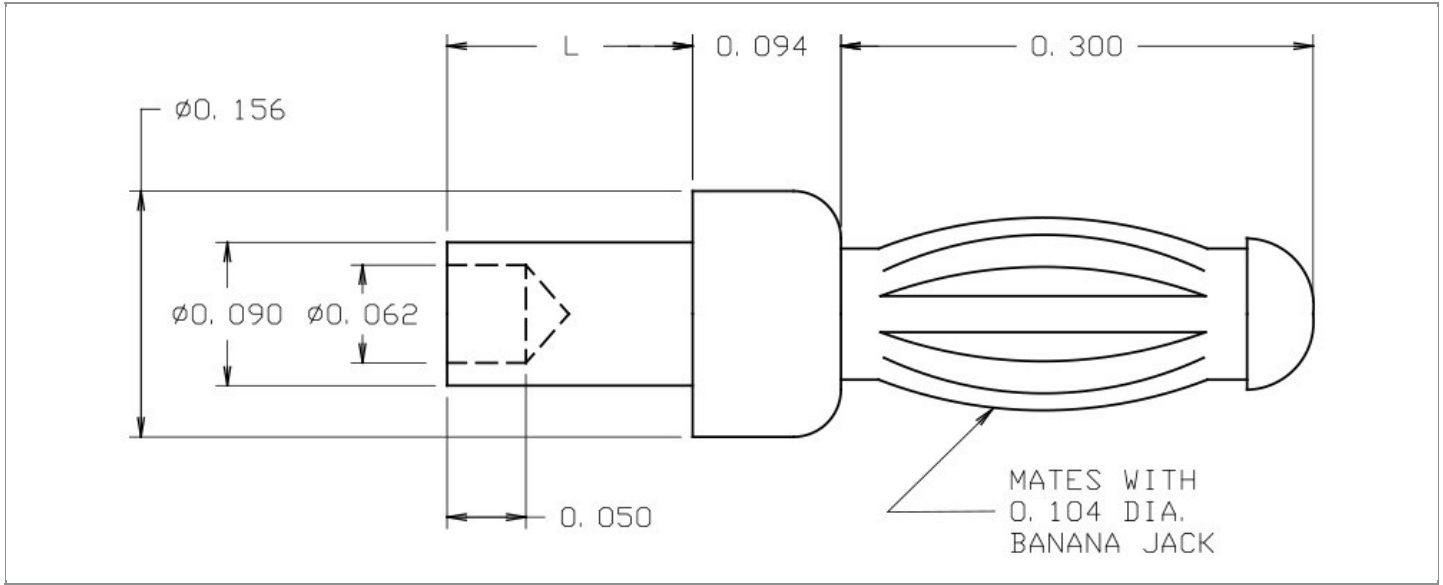


<b>DRAWING NUMBER:</b>	<b>01-2259-X-XX</b>
<b>PRODUCT GROUP:</b>	BANANA PLUGS, JACKS AND PHONE TIPS
<b>SUB-GROUP:</b>	NON-INSULATED BANANA PLUGS
<b>DESCRIPTION:</b>	NON-INSULATED MINIATURE BANANA PLUG



ACCEPTS PIN / PLUG / JACK SIZE	BOARD / PANEL MOUNTING METHOD	MOUNTING HOLE SIZE	DRILL SIZE
MINIATURE BANANA JACK	SWAGE MOUNT	0.096" ± 0.001	#41

### PART NO. STRUCTURE:

**01-2259** - **X** - **XX**  
PART SERIES    DIMENSION    FINISH

### MATERIAL OPTIONS:

**01-2259-X-XX**

COMPONENT	MATERIAL	MATERIAL AND SPECIFICATION
BODY	BRASS	BRASS PER ASTM B16, ALLOY C36000, 1/2 HARD
SPRING (CAGE)	BERYLLIUM COPPER	BERYLLIUM COPPER PER ASTM B194, ALLOY C17200
NUT	N/A	N/A
SCREW	N/A	N/A
STUD	N/A	N/A
LUG	N/A	N/A

DIMENSION OPTIONS:

01-2259-X-XX

DIMENSION	SHANK LENGTH (L)	BOARD/PANEL THICKNESS
2	0.094"	1/16"
3	0.125"	3/32"
4	0.156"	1/8"
6	0.240"	3/16"

FINISH - PLATING OPTIONS:

01-2259-X-XX

FINISH CODE	COMPONENT	FINISH	FINISH AND SPECIFICATION
01	BODY	SILVER	0.000100"MIN. SILVER PER ASTM B700, TYPE 2, GRADE D WITH A NON-CHROMATE PRESERVATIVE TREATMENT
	BODY	SILVER	0.000100"MIN. SILVER PER ASTM B700, TYPE 2, GRADE D WITH A NON-CHROMATE PRESERVATIVE TREATMENT
	SPRING (CAGE)	SILVER	0.000300"MIN. SILVER PER ASTM B700, TYPE 2, GRADE D WITH A NON-CHROMATE PRESERVATIVE TREATMENT
	SPRING (CAGE)	SILVER	0.000300"MIN. SILVER PER ASTM B700, TYPE 2, GRADE D WITH A NON-CHROMATE PRESERVATIVE TREATMENT
	NUT	N/A	N/A
	SCREW	N/A	N/A
	STUD	N/A	N/A
	LUG	N/A	N/A
02	BODY	NICKEL	0.000100"MIN. NICKEL PER SAE-AMS-QQ-N-290
	SPRING (CAGE)	NICKEL	0.000200"MIN. NICKEL PER SAE-AMS-QQ-N-290
	NUT	N/A	N/A
	SCREW	N/A	N/A
	STUD	N/A	N/A
	LUG	N/A	N/A
03	BODY	GOLD	GOLD FLASH PER ASTM B488, TYPE II, CODE C
	BODY	GOLD FLASH	GOLD FLASH PER ASTM B488, TYPE II, CODE C
	SPRING (CAGE)	GOLD	0.000010"MIN. GOLD PER ASTM B488, TYPE II, CODE C
	NUT	N/A	N/A
	SCREW	N/A	N/A

Continued on next page...

FINISH - PLATING OPTIONS CONTINUED:

01-2259-X-**XX**

FINISH CODE	COMPONENT	FINISH	FINISH AND SPECIFICATION
STUD	N/A	N/A	
LUG	N/A	N/A	
044	BODY	BRIGHT ELECTRO-TIN	0.000200"MIN. BRIGHT ELECTRO-TIN PER ASTM B545
	SPRING (CAGE)	BRIGHT ELECTRO-TIN	0.000200"MIN. BRIGHT ELECTRO-TIN PER ASTM B545
	NUT	N/A	N/A
	SCREW	N/A	N/A
	STUD	N/A	N/A
	LUG	N/A	N/A

TOLERANCES:\*

DECIMAL	FRACTIONAL	ANGULAR	DRAWING ORIGATION DATE	LAST MODIFICATION DATE
± 0.005	± 1/64	± 5°	1/13/1998	4/1/2017

\*All dimensions are in inches.

RoHS COMPLIANCE:

01-2259-2-XX

PART NUMBER	RoHS COMPLIANT
01-2259-2-01	YES
01-2259-2-02	YES
01-2259-2-03	YES
01-2259-2-044	YES

01-2259-3-XX

PART NUMBER	RoHS COMPLIANT
01-2259-3-01	YES
01-2259-3-02	YES
01-2259-3-03	YES
01-2259-3-044	YES

01-2259-4-XX

PART NUMBER	RoHS COMPLIANT
01-2259-4-01	YES
01-2259-4-02	YES
01-2259-4-03	YES
01-2259-4-044	YES

01-2259-6-XX

PART NUMBER	RoHS COMPLIANT
01-2259-6-01	YES
01-2259-6-02	YES
01-2259-6-03	YES
01-2259-6-044	YES

**TOOLING:**

INSTALLATION TOOL: ARBOR PRESS	INSTALLATION TOOL: ANVIL (ARBOR PRESS OPERATED)	INSTALLATION TOOL: PRESS-FIT / ROLL SWAGE / RIVET PUNCH (ARBOR PRESS OPERATED)
TM1	TA156-104-94	TP90-62

**NOTES:**

**DATASHEET NOTES**

RATED: 5 AMPERES CAPACITY. MINIATURE SIZE SPRING FOR MINIATURE SIZE BANANA JACK.

PART NUMBER	INSTRUCTION NOTES
25-2259-4-03-MOD.	SEE GENERAL SWAGING INSTALLATION INSTRUCTION ON CONCORD ELECTRONICS' WEBSITE WWW.CONCORD-ELECTRONICS.COM
25-2259-X-03	SEE GENERAL SWAGING INSTALLATION INSTRUCTION ON CONCORD ELECTRONICS' WEBSITE WWW.CONCORD-ELECTRONICS.COM.