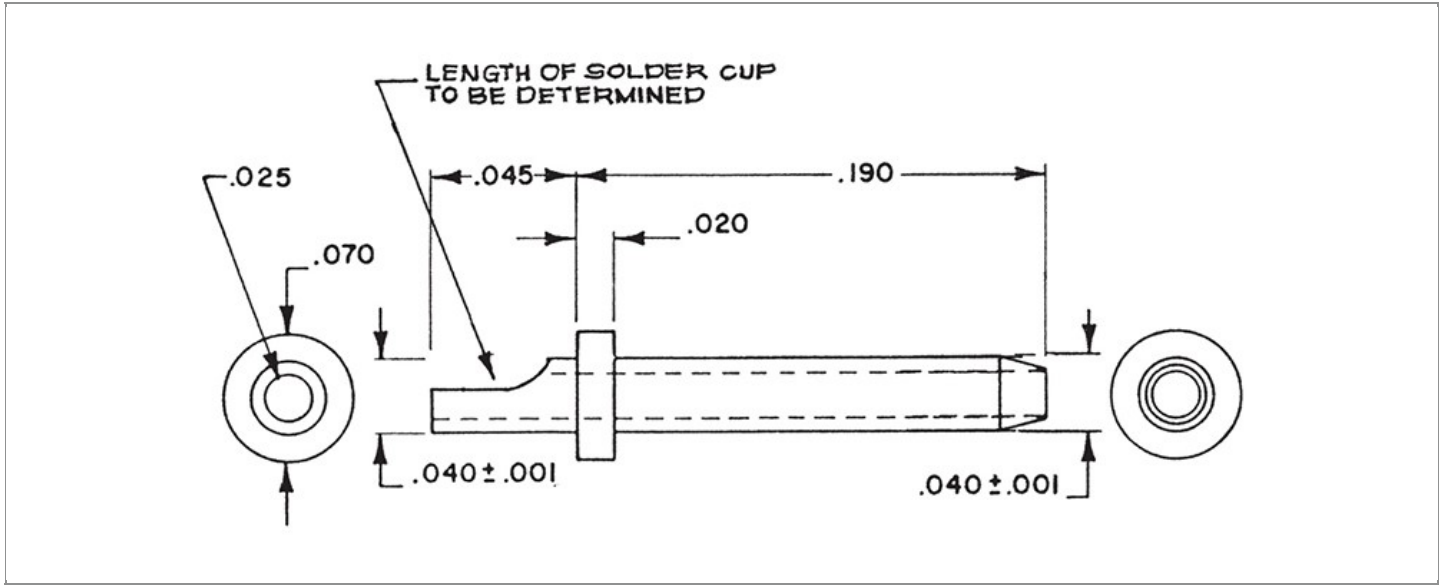


| | |
|------------------------|-----------------------------------------------------|
| DRAWING NUMBER: | 09-8639-1-XX |
| PRODUCT GROUP: | TERMINALS |
| SUB-GROUP: | COMMERCIAL NON-INSULATED WIRE APPLIED PIN TERMINALS |
| DESCRIPTION: | NON-INSULATED PIN TERMINAL WITH SOLDER CUP |



| CABLE / WIRE SIZE | PIN DIAMETER | OVERALL LENGTH | MIN. HOLE DEPTH |
|-------------------|----------------|----------------|-----------------|
| 28 AWG | 0.040" ± 0.001 | 0.235" | 0.045" |

PART NO. STRUCTURE:

| | | | | |
|----------------|---|-----------|---|-----------|
| 09-8639 | - | 1 | - | XX |
| PART SERIES | | DIMENSION | | FINISH |

MATERIAL OPTIONS:

09-8639-1-XX

| COMPONENT | MATERIAL | MATERIAL AND SPECIFICATION |
|------------|----------|--------------------------------------------|
| PIN | BRASS | BRASS PER ASTM B16, ALLOY C36000, 1/2 HARD |

FINISH - PLATING OPTIONS:

09-8639-1-XX

| FINISH CODE | COMPONENT | FINISH | FINISH AND SPECIFICATION |
|-------------|------------|--------------------|--------------------------------------------------------------------------------------------------|
| 03 | PIN | GOLD | 0.000010"MIN. GOLD PER ASTM B488, TYPE II, CODE C OVER 0.000050"MIN. NICKEL PER SAE-AMS-QQ-N-290 |
| 035 | PIN | GOLD | 0.000050"MIN. GOLD PER ASTM B488, TYPE II, CODE C OVER 0.000050"MIN. NICKEL PER SAE-AMS-QQ-N-290 |
| 04 | PIN | ELECTRO-TIN | 0.000300"MIN. ELECTRO-TIN PER ASTM B545 OVER 0.000100"MIN. COPPER PER SAE-AMS-2418 |
| 044 | PIN | BRIGHT ELECTRO-TIN | 0.000300"MIN. BRIGHT ELECTRO-TIN PER ASTM B545 OVER 0.000100"MIN. COPPER PER SAE-AMS-2418 |

Continued on next page...

FINISH - PLATING OPTIONS CONTINUED:

09-8639-1-XX

| FINISH CODE | COMPONENT | FINISH | FINISH AND SPECIFICATION |
|-------------|-----------|-----------------|-----------------------------------------------------------------------------------------------------|
| 05 | PIN | ELECTRO-SOLDER | 0.000300"MIN. ELECTRO-SOLDER PER SAE-AMS-P-81728 OVER 0.000100"MIN. COPPER PER SAE-AMS-2418 |
| 088 | PIN | BRIGHT TIN-LEAD | 0.000300"MIN. BRIGHT TIN-LEAD (Sn93%-Pb7%) PER ASTM B545 OVER 0.000100"MIN. COPPER PER SAE-AMS-2418 |

TOLERANCES:*

| DECIMAL | FRACTIONAL | ANGULAR | DRAWING ORIGATION DATE | LAST MODIFICATION DATE |
|---------|------------|---------|------------------------|------------------------|
| N/A | N/A | N/A | 8/22/1989 | 3/1/2017 |

*All dimensions are in inches.

RoHS COMPLIANCE:

09-8639-1-XX

| PART NUMBER | RoHS COMPLIANT |
|---------------|----------------|
| 09-8639-1-03 | YES |
| 09-8639-1-035 | YES |
| 09-8639-1-04 | YES |
| 09-8639-1-044 | YES |
| 09-8639-1-05 | NO |
| 09-8639-1-088 | NO |

TOOLING:

| CRIMPING TOOL (COMMERCIAL VERSION) |
|---------------------------------------|
| N/A |

NOTES:

| DATASHEET NOTES |
|-----------------------------------------------------------------------------------------------------------------------|
| RECOMMENDED WIRE FOR SOLDERING: 28 AWG, 7 STRAND, NO. 36 COPPER WIRE, PTFE INSULATED. MINIMUM HOLE DEPTH: 0.045". |
| INSTRUCTION NOTES |
| STRIP INSULATION OF 28 AWG WIRE TO LENGTH OF MIN. HOLE DEPTH OF BARREL AND INSERT IT INTO END HOLE OF PIN AND SOLDER. |