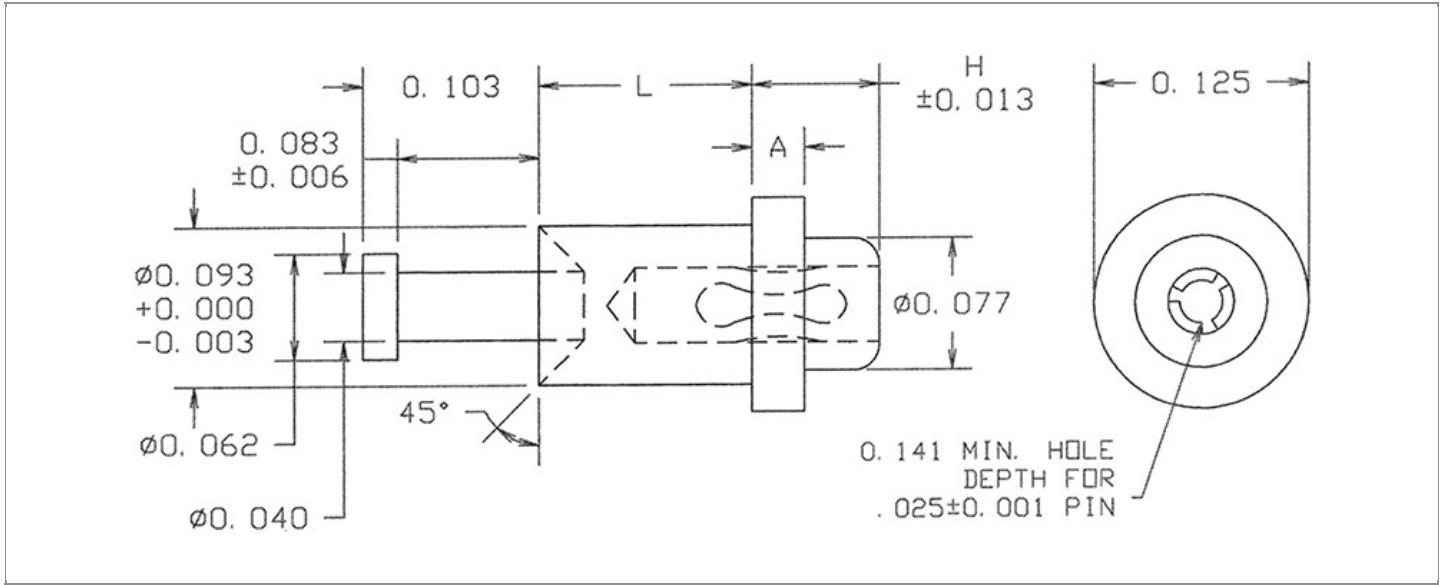


|                        |                                     |
|------------------------|-------------------------------------|
| <b>DRAWING NUMBER:</b> | <b>09-9045-X-XX</b>                 |
| <b>PRODUCT GROUP:</b>  | PC JACKS                            |
| <b>SUB-GROUP:</b>      | NON-INSULATED PC JACKS              |
| <b>DESCRIPTION:</b>    | PC JACK - NON-INSULATED - FEED THRU |



| ACCEPTS PIN / PLUG / JACK SIZE | MOUNTING ORIENTATION | BOARD / PANEL MOUNTING METHOD | MOUNTING HOLE SIZE     | DRILL SIZE | FEED THRU COMBINATION |
|--------------------------------|----------------------|-------------------------------|------------------------|------------|-----------------------|
| 0.025" ± 0.001                 | VERTICAL             | SWAGE MOUNT                   | 0.094" (+0.002/-0.001) | 3/32"      | JACK/TURRET           |

**PART NO. STRUCTURE:**

**09-9045** - **X** - **XX**  
 PART SERIES    DIMENSION    FINISH

**MATERIAL OPTIONS:**

**09-9045-X-XX**

| COMPONENT               | MATERIAL         | MATERIAL AND SPECIFICATION                   |
|-------------------------|------------------|--|
| <b>BODY</b>             | BRASS            | BRASS PER ASTM B16, ALLOY C36000, 1/2 HARD   |
| <b>SPRING (CAGE)</b>    | BERYLLIUM COPPER | BERYLLIUM COPPER PER ASTM B194, ALLOY C17200 |
| <b>MOUNTING BRACKET</b> | N/A              | N/A  |

## DIMENSION OPTIONS:

09-9045-X-XX

| DIMENSION | A      | H      | OVERALL LENGTH | MIN. HOLE DEPTH | SHANK LENGTH (L) | BOARD/PANEL THICKNESS |
|-----------|--------|--------|----------------|-----------------|------------------|-----------------------|
| 2         | 0.062" | 0.106" | 0.303"         | 0.141"          | 0.094"           | 1/16"                 |
| 3         | 0.031" | 0.075" | 0.303"         | 0.141"          | 0.125"           | 3/32"                 |
| 4         | 0.031" | 0.075" | 0.334"         | 0.141"          | 0.156"           | 1/8"                  |
| 6         | 0.031" | 0.075" | 0.397"         | 0.141"          | 0.219"           | 3/16"                 |

## FINISH - PLATING OPTIONS:

09-9045-X-XX

| FINISH CODE | COMPONENT        | FINISH             | FINISH AND SPECIFICATION   |
|-------------|------------------|--------------------|--|
| 03          | BODY             | GOLD               | 0.00010"MIN. GOLD PER ASTM B488, TYPE II, CODE C OVER 0.000100"MIN. NICKEL PER SAE-AMS-QQ-N-290, CLASS 2         |
|             | SPRING (CAGE)    | GOLD               | 0.000030"MIN. GOLD PER ASTM B488, TYPE II, CODE C OVER 0.000100"MIN. NICKEL PER SAE-AMS-QQ-N-290, CLASS 2        |
|             | MOUNTING BRACKET | N/A                | N/A  |
| 035         | BODY             | GOLD               | 0.000020"MIN. GOLD PER ASTM B488, TYPE II, CODE C OVER 0.000100"MIN. NICKEL PER SAE-AMS-QQ-N-290, CLASS 2        |
|             | SPRING (CAGE)    | GOLD               | 0.000050"MIN. GOLD PER ASTM B488, TYPE II, CODE C OVER 0.000100"MIN. NICKEL PER SAE-AMS-QQ-N-290, CLASS 2        |
|             | MOUNTING BRACKET | N/A                | N/A  |
| 04          | BODY             | ELECTRO-TIN        | 0.000100"MIN. ELECTRO-TIN PER ASTM B545 OVER 0.000100"MIN. NICKEL PER SAE-AMS-QQ-N-290, CLASS 2                  |
|             | SPRING (CAGE)    | BRIGHT ELECTRO-TIN | 0.000200"MIN. BRIGHT ELECTRO-TIN PER ASTM B545 OVER 0.000050"MIN. NICKEL PER SAE-AMS-QQ-N-290, CLASS 2           |
|             | MOUNTING BRACKET | N/A                | N/A  |
| 06          | BODY             | ELECTRO-TIN        | 0.000100"MIN. ELECTRO-TIN PER ASTM B545 OVER 0.000100"MIN. NICKEL PER SAE-AMS-QQ-N-290, CLASS 2                  |
|             | SPRING (CAGE)    | GOLD               | 0.000030"MIN. GOLD PER ASTM B488, TYPE II, CODE C OVER 0.000100"MIN. NICKEL PER SAE-AMS-QQ-N-290, CLASS 2        |
|             | MOUNTING BRACKET | N/A                | N/A  |
| 063         | BODY             | BRIGHT TIN-LEAD    | 0.000200"MIN. BRIGHT TIN-LEAD (Sn93%-Pb7%) PER ASTM B545 OVER 0.000100"MIN. NICKEL PER SAE-AMS-QQ-N-290, CLASS 2 |
|             | SPRING (CAGE)    | GOLD               | 0.000030"MIN. GOLD PER ASTM B488, TYPE II, CODE C OVER 0.000100"MIN. NICKEL PER SAE-AMS-QQ-N-290, CLASS 2        |
|             | MOUNTING BRACKET | N/A                | N/A  |
| 088         | BODY             | BRIGHT TIN-LEAD    | 0.000200"MIN. BRIGHT TIN-LEAD (Sn93%-Pb7%) PER ASTM B545 OVER 0.000100"MIN. NICKEL PER SAE-AMS-QQ-N-290, CLASS 2 |
|             | SPRING (CAGE)    | BRIGHT TIN-LEAD    | 0.000200"MIN. BRIGHT TIN-LEAD (Sn93%-Pb7%) PER ASTM B545 OVER 0.000100"MIN. NICKEL PER SAE-AMS-QQ-N-290, CLASS 2 |
|             | MOUNTING BRACKET | N/A                | N/A  |

TOLERANCES:\*

| DECIMAL | FRACTIONAL | ANGULAR | DRAWING ORIGATION DATE | LAST MODIFICATION DATE |
|---------|------------|---------|------------------------|------------------------|
| ± 0.010 | ± 1/64     | ± 5 °   | 05/11/01               | 01/01/17               |

\*All dimensions are in inches.

RoHS COMPLIANCE:

09-9045-2-XX

| PART NUMBER   | RoHS COMPLIANT |
|---------------|----------------|
| 09-9045-2-03  | YES            |
| 09-9045-2-035 | YES            |
| 09-9045-2-04  | YES            |
| 09-9045-2-06  | YES            |
| 09-9045-2-063 | NO             |
| 09-9045-2-088 | NO             |

09-9045-3-XX

| PART NUMBER   | RoHS COMPLIANT |
|---------------|----------------|
| 09-9045-3-03  | YES            |
| 09-9045-3-035 | YES            |
| 09-9045-3-04  | YES            |
| 09-9045-3-06  | YES            |
| 09-9045-3-063 | NO             |
| 09-9045-3-088 | NO             |

09-9045-4-XX

| PART NUMBER   | RoHS COMPLIANT |
|---------------|----------------|
| 09-9045-4-03  | YES            |
| 09-9045-4-035 | YES            |
| 09-9045-4-04  | YES            |
| 09-9045-4-06  | YES            |
| 09-9045-4-063 | NO             |
| 09-9045-4-088 | NO             |

09-9045-6-XX

| PART NUMBER   | RoHS COMPLIANT |
|---------------|----------------|
| 09-9045-6-03  | YES            |
| 09-9045-6-035 | YES            |
| 09-9045-6-04  | YES            |
| 09-9045-6-06  | YES            |
| 09-9045-6-063 | NO             |
| 09-9045-6-088 | NO             |

TOOLING:

| INSTALLATION TOOL:<br>ARBOR PRESS | INSTALLATION TOOL:<br>ANVIL<br>(ARBOR PRESS OPERATED) | INSTALLATION TOOL:<br>PRESS-FIT / ROLL SWAGE<br>/ RIVET PUNCH<br>(ARBOR PRESS OPERATED) | CRIMPING TOOL<br>(COMMERCIAL VERSION) |
|-----------------------------------|---|---|---------------------------------------|
| TM1                               | TA09-9045   | TP09-9045   | N/A                                   |

NOTES:

|   |
|---|
| <b>DATASHEET NOTES</b>  |
| N/A   |
| <b>INSTRUCTION NOTES</b>  |
| SEE GENERAL SWAGING INSTALLATION INSTRUCTION ON CONCORD ELECTRONICS' WEBSITE <a href="http://WWW.CONCORD-ELECTRONICS.COM">WWW.CONCORD-ELECTRONICS.COM</a> . |