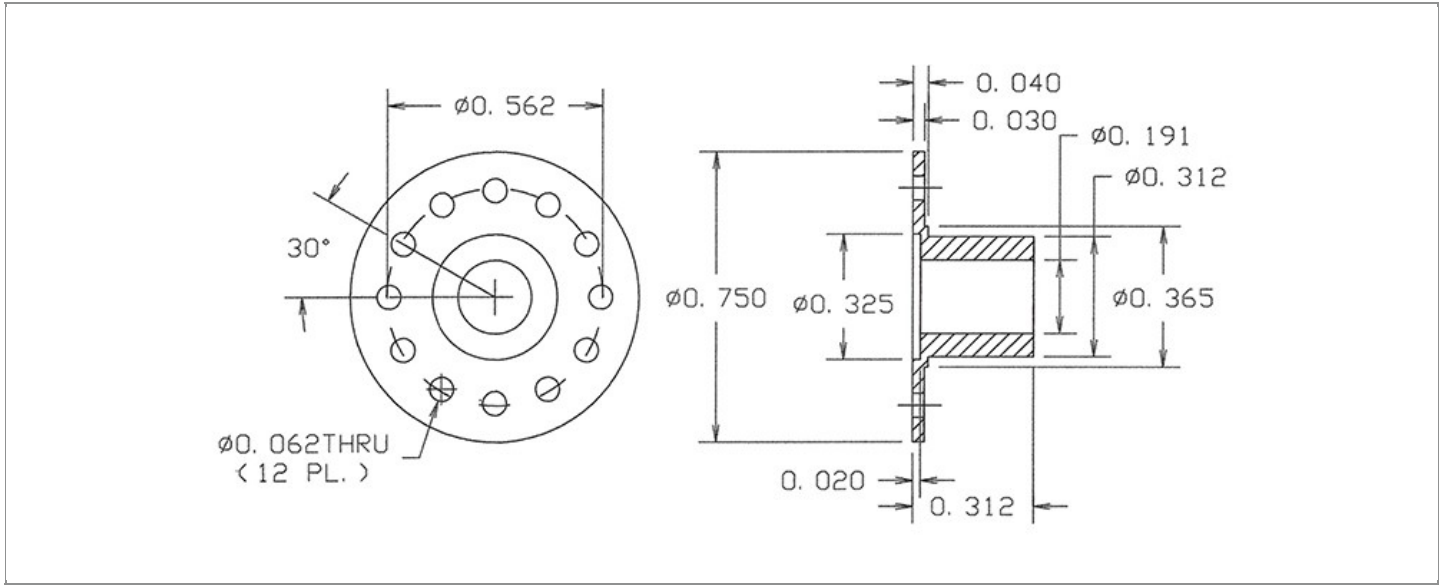


|                        |                                  |
|------------------------|----------------------------------|
| <b>DRAWING NUMBER:</b> | <b>09-0018-1M-XX</b>             |
| <b>PRODUCT GROUP:</b>  | TERMINALS                        |
| <b>SUB-GROUP:</b>      | MILITARY NON-INSULATED TERMINALS |
| <b>DESCRIPTION:</b>    | NON-INSULATED GROUNDING TERMINAL |



| BOARD / PANEL MOUNTING METHOD | MOUNTING HOLE SIZE     | DRILL SIZE | FEED THRU COMBINATION |
|-------------------------------|------------------------|------------|-----------------------|
| THREAD MOUNT (8-32 SCREW)     | CLEARANCE FOR #8 SCREW | #18        | N/A                   |

**PART NO. STRUCTURE:**

|                |   |           |   |           |
|----------------|---|-----------|---|-----------|
| <b>09-0018</b> | - | <b>1M</b> | - | <b>XX</b> |
| PART SERIES    |   | DIMENSION |   | FINISH    |

**MATERIAL OPTIONS:**

**09-0018-1M-XX**

| COMPONENT | MATERIAL | MATERIAL AND SPECIFICATION                 |
|-----------|----------|--|
| TERMINAL  | BRASS    | BRASS PER ASTM B16, ALLOY C36000, 1/2 HARD |

**DIMENSION OPTIONS:**

**09-0018-1M-XX**

| DIMENSION | K   | OVERALL LENGTH | SHANK LENGTH (L) | BOARD/PANEL THICKNESS |
|-----------|-----|----------------|------------------|-----------------------|
| <b>1M</b> | N/A | 0.312"         | N/A              | N/A                   |

FINISH - PLATING OPTIONS:

09-0018-1M-XX

| FINISH CODE | COMPONENT | FINISH          | FINISH AND SPECIFICATION   |
|-------------|-----------|-----------------|--|
| 05          | TERMINAL  | ELECTRO-SOLDER  | 0.000300"MIN. ELECTRO-SOLDER PER SAE-AMS-P-81728 OVER 0.000100"MIN. COPPER PER SAE-AMS-2418          |
| 088         | TERMINAL  | BRIGHT TIN-LEAD | 0.000300"MIN. BRIGHT TIN-LEAD (Sn93%-Pb7%) PER ASTM B545 OVER 0.000100"MIN. COPPER PER SAE-AMS-2418  |
| 095         | TERMINAL  | HOT SOLDER DIP  | 0.000100"MIN. HOT SOLDER DIP USING Sn60 PER IPC-J-STD-006 OVER 0.000100"MIN. COPPER PER SAE-AMS-2418 |

TOLERANCES:\*

| DECIMAL | FRACTIONAL | ANGULAR | DRAWING ORIGATION DATE | LAST MODIFICATION DATE |
|---------|------------|---------|------------------------|------------------------|
| ± 0.005 | N/A        | ± 1/2 ° | 8/22/1996              | 3/1/2017               |

\*All dimensions are in inches.

RoHS COMPLIANCE:

09-0018-1M-XX

| PART NUMBER    | RoHS COMPLIANT |
|----------------|----------------|
| 09-0018-1M-05  | NO             |
| 09-0018-1M-088 | NO             |
| 09-0018-1M-095 | NO             |

MILITARY REFERENCE SPECIFICATIONS:

09-0018-1M-XX

| PART NUMBER    | MIL SPECIFICATION | MIL PART NUMBER                            | COMMERCIAL ITEM DESCRIPTION (CID) SPECIFICATION | CID PART NUMBER               |
|----------------|-------------------|--|---|-------------------------------|
| 09-0018-1M-05  | MIL-T-55155/26    | M55155/26XH01<br>(M55155/26-1S; SE26XF01S) | A-A-59126/26                                    | AA59126/26XH01                |
| 09-0018-1M-088 | MIL-T-55155/26    | M55155/26XJ01                              | A-A-59126/26                                    | AA59126/26XJ01 (AA59126/2601) |
| 09-0018-1M-095 | MIL-T-55155/26    | M55155/26XI01                              | A-A-59126/26                                    | AA59126/26XI01                |

TOOLING:

| INSTALLATION TOOL:<br>ARBOR PRESS | INSTALLATION TOOL:<br>ANVIL<br>(ARBOR PRESS OPERATED) | INSTALLATION TOOL: PRESS-FIT /<br>ROLL SWAGE / RIVET PUNCH<br>(ARBOR PRESS OPERATED) | INSTALLATION TOOL:<br>FLARE SWAGE PUNCH<br>(ARBOR PRESS OPERATED) |
|-----------------------------------|---|--|---|
| N/A                               | N/A   | N/A  | N/A   |

**NOTES:**

---

---

**DATASHEET NOTES**

SCREW IS NOT INCLUDED.

---

**INSTRUCTION NOTES**

N/A

---