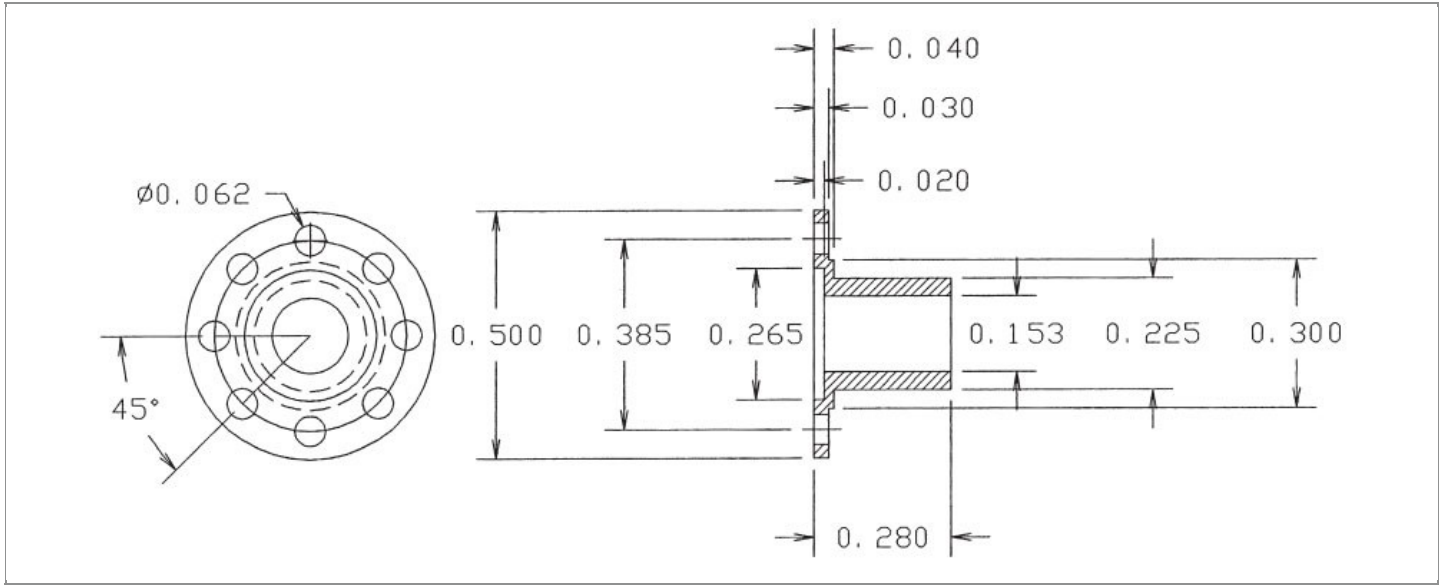


<b>DRAWING NUMBER:</b>	<b>09-0016-1M-XX</b>
<b>PRODUCT GROUP:</b>	TERMINALS
<b>SUB-GROUP:</b>	MILITARY NON-INSULATED TERMINALS
<b>DESCRIPTION:</b>	NON-INSULATED GROUNDING TERMINAL



BOARD / PANEL MOUNTING METHOD	MOUNTING HOLE SIZE	DRILL SIZE	FEED THRU COMBINATION
THREAD MOUNT (6-32 SCREW)	CLEARANCE FOR #6 SCREW	#27	N/A

### PART NO. STRUCTURE:

<b>09-0016</b>	-	<b>1M</b>	-	<b>XX</b>
PART SERIES		DIMENSION		FINISH

### MATERIAL OPTIONS:

**09-0016-1M-XX**

COMPONENT	MATERIAL	MATERIAL AND SPECIFICATION
TERMINAL	BRASS	BRASS PER ASTM B16, ALLOY C36000, 1/2 HARD

### DIMENSION OPTIONS:

09-0016-**1M**-XX

DIMENSION	K	OVERALL LENGTH	SHANK LENGTH (L)	BOARD/PANEL THICKNESS
<b>1M</b>	N/A	0.280"	N/A	N/A

## FINISH - PLATING OPTIONS:

09-0016-1M-XX

FINISH CODE	COMPONENT	FINISH	FINISH AND SPECIFICATION
05	TERMINAL	ELECTRO-SOLDER	0.000300"MIN. ELECTRO-SOLDER PER SAE-AMS-P-81728 OVER 0.000100"MIN. COPPER PER SAE-AMS-2418
088	TERMINAL	BRIGHT TIN-LEAD	0.000300"MIN. BRIGHT TIN-LEAD (Sn93%-Pb7%) PER ASTM B545 OVER 0.000100"MIN. COPPER PER SAE-AMS-2418
095	TERMINAL	HOT SOLDER DIP	0.000100"MIN. HOT SOLDER DIP USING Sn60 PER IPC-J-STD-006 OVER 0.000100"MIN. COPPER PER SAE-AMS-2418

## TOLERANCES:\*

DECIMAL	FRACTIONAL	ANGULAR	DRAWING ORIGATION DATE	LAST MODIFICATION DATE
± 0.005	N/A	± 1/2 °	1/16/1997	3/1/2017

\*All dimensions are in inches.

## RoHS COMPLIANCE:

09-0016-1M-XX

PART NUMBER	RoHS COMPLIANT
09-0016-1M-05	NO
09-0016-1M-088	NO
09-0016-1M-095	NO

## MILITARY REFERENCE SPECIFICATIONS:

09-0016-1M-XX

PART NUMBER	MIL SPECIFICATION	MIL PART NUMBER	COMMERCIAL ITEM DESCRIPTION (CID) SPECIFICATION	CID PART NUMBER
09-0016-1M-05	MIL-T-55155/26	M55155/26XH03 (M55155/26-3S; SE26XF03S)	A-A-59126/26	AA59126/26XH03
09-0016-1M-088	MIL-T-55155/26	M55155/26XJ03	A-A-59126/26	AA59126/26XJ03 (AA59126/2603)
09-0016-1M-095	MIL-T-55155/26	M55155/26XI03	A-A-59126/26	AA59126/26XI03

## TOOLING:

INSTALLATION TOOL: ARBOR PRESS	INSTALLATION TOOL: ANVIL (ARBOR PRESS OPERATED)	INSTALLATION TOOL: PRESS-FIT / ROLL SWAGE / RIVET PUNCH (ARBOR PRESS OPERATED)	INSTALLATION TOOL: FLARE SWAGE PUNCH (ARBOR PRESS OPERATED)
N/A	N/A	N/A	N/A

**NOTES:**

---

---

**DATASHEET NOTES**

SCREW IS NOT INCLUDED.

---

**INSTRUCTION NOTES**

N/A

---